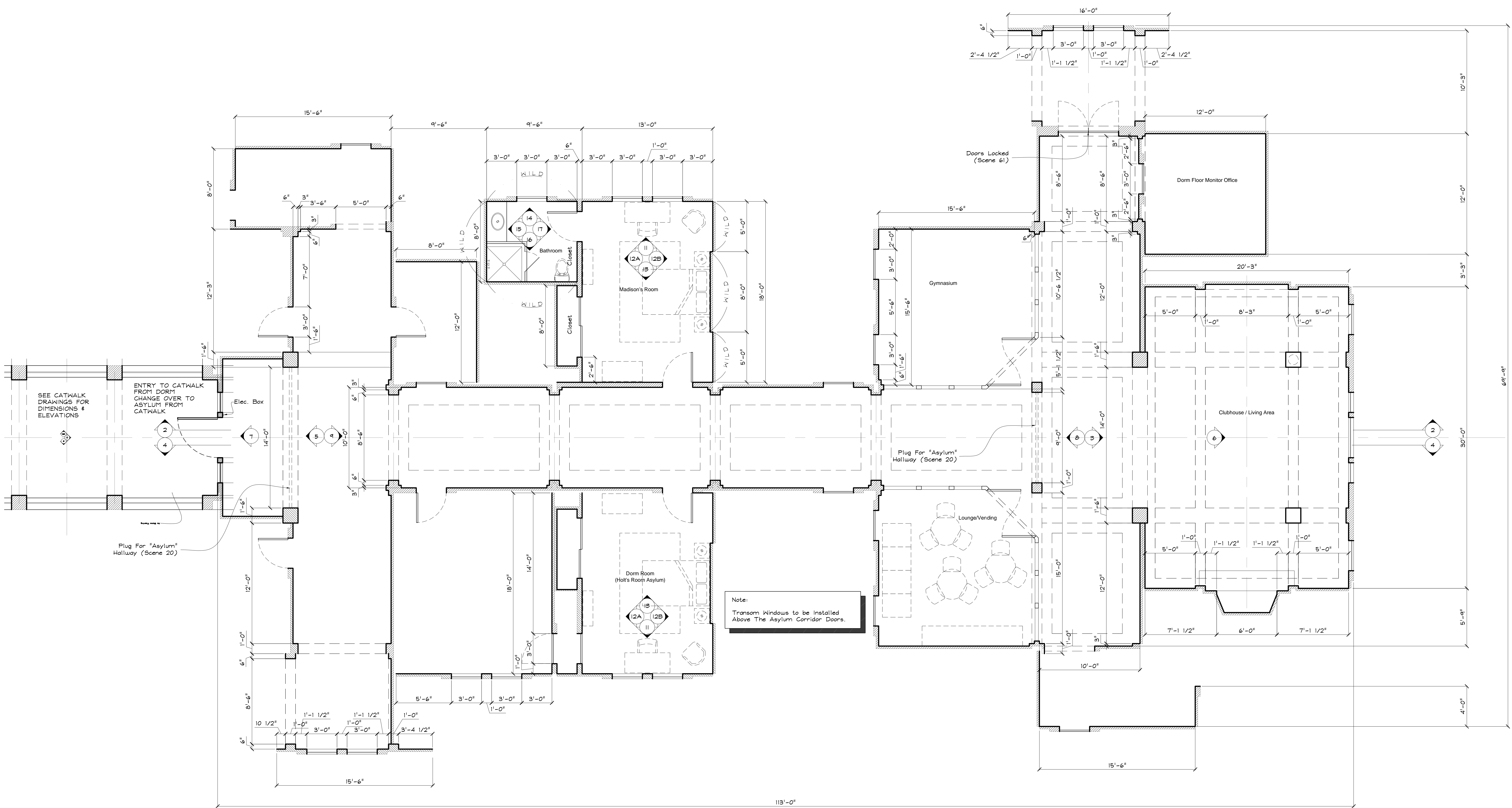


- ASYLUM CHANGEOVER CONSTRUCTION NOTES:**
- 26 Panel Doors- Single Lite 3 Panel Ladder.
 - $\frac{1}{2}$ " raised Panel Wainscot (Plant On $\frac{1}{2}$ " MDF Routed).
 - Chair Rail / Panel Mould @ 48" Above Floor on Top of Wainscot.
 - 1 x 6 Wood Base Mould w/ Single Ogee Edge.
 - 1 x 3 Wood Picture Rail w/ 2 Ogee Edges.
 - Change Out Ceiling Panels to Hard Ceiling.
 - Remove Flooring to Expose Concrete Floor or Tile (Square Line.).
 - Age Walls, Ceiling & Floors.

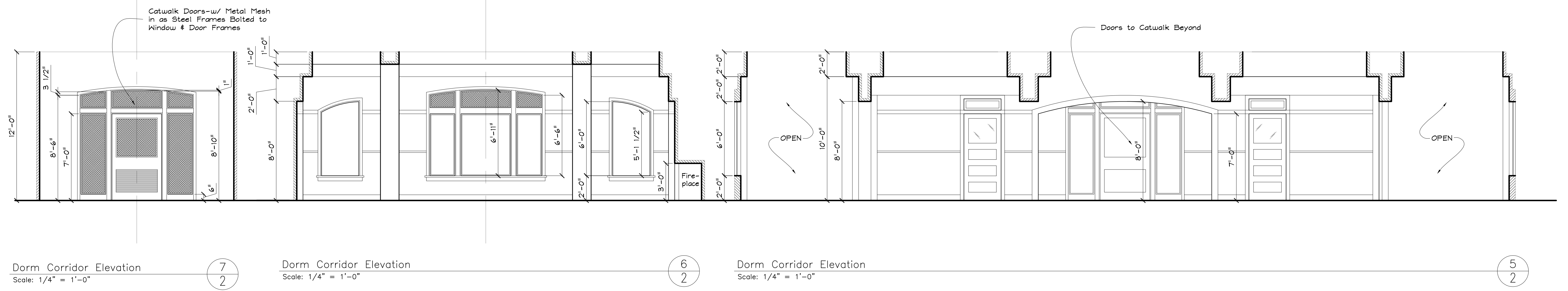


Note:
Transom Windows to be installed
Above The Asylum Corridor Doors.

Dorm Corridor Plan
Scale: 1/4" = 1'-0"

1
1

HYDE PARK ENTERTAINMENT	
DIRECTOR:	David Ellis
PRODUCER:	Ashek Amritraj
PRODUCTION DESIGNER:	Jaymes Munkie
SET: ASYLUM CORRIDOR	
SCALE: 1/4" = 1'-0"	
LOCATION:	
DATE: November 26, 2007	PAGE: 1 of 4



Dorm Corridor Elevation
Scale: 1/4" = 1'-0"

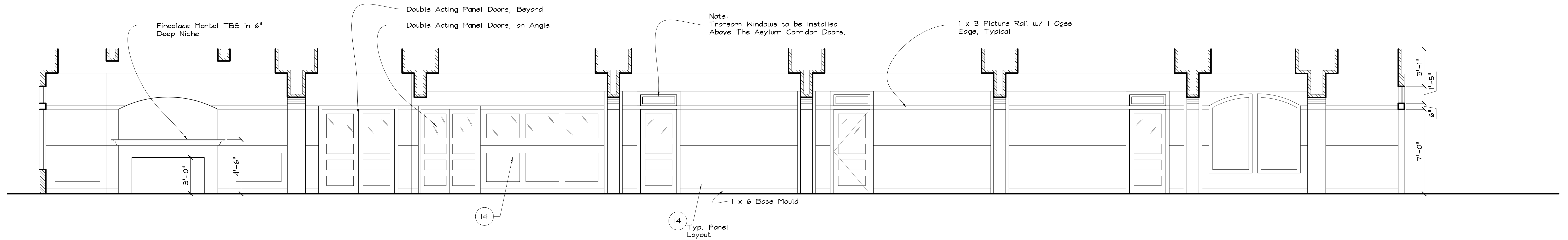
7
2

Dorm Corridor Elevation
Scale: 1/4" = 1'-0"

6
2

Dorm Corridor Elevation
Scale: 1/4" = 1'-0"

5
2

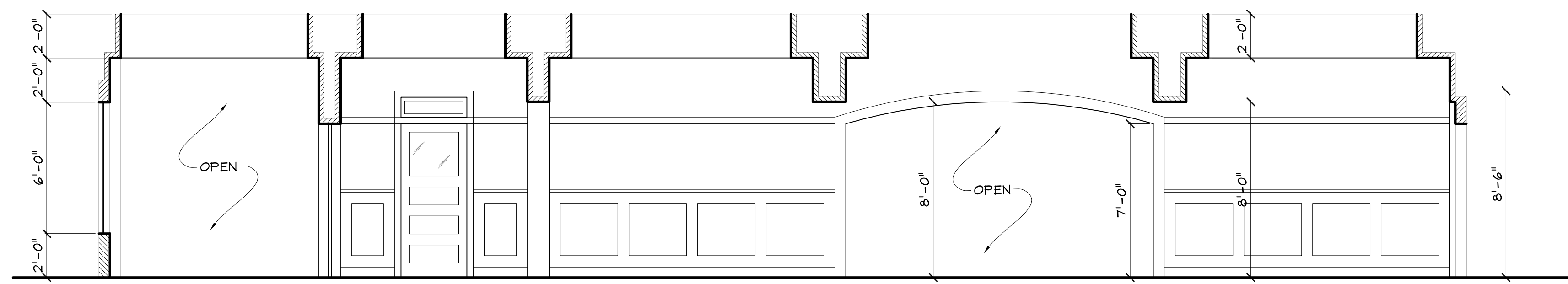


Dorm Corridor Elevation
Scale: 1/4" = 1'-0"

14

14
Typ. Panel Layout

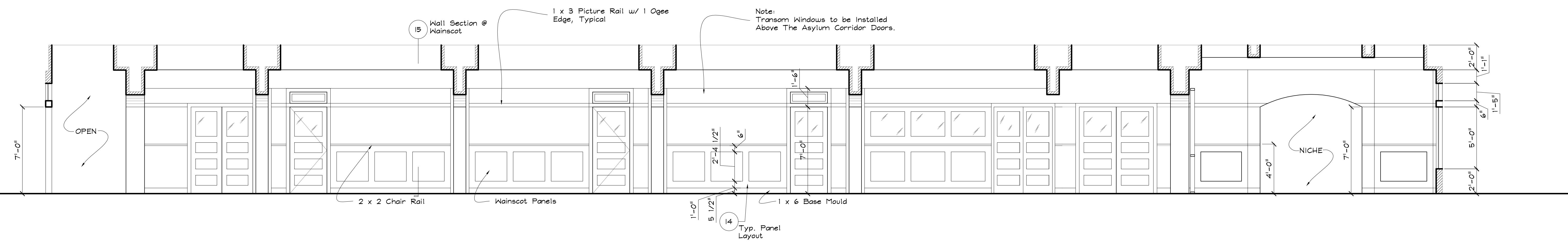
4
2



Dorm Corridor Elevation
Scale: 1/4" = 1'-0"

3
2

- ASYLUM CHANGEOVER
CONSTRUCTION NOTES:
- 26 Panel Doors- Single Lite 3 Panel Ladder.
 - 1/2" raised Panel Wainscot (Plant On 1/2" MDF Routed).
 - Chair Rail / Panel Mould @ 48" Above Floor on Top of Wainscot.
 - 1 x 6 Wood Base Mould w/ Single Ogee Edge.
 - 1 x 3 Wood Picture Rail w/ 2 Ogee Edges.
 - Change Out Ceiling Panels to Hard Ceiling.
 - Remove Flooring to Expose Concrete Floor or Tile (Square Lino.).
 - Age Walls, Ceiling & Floors.



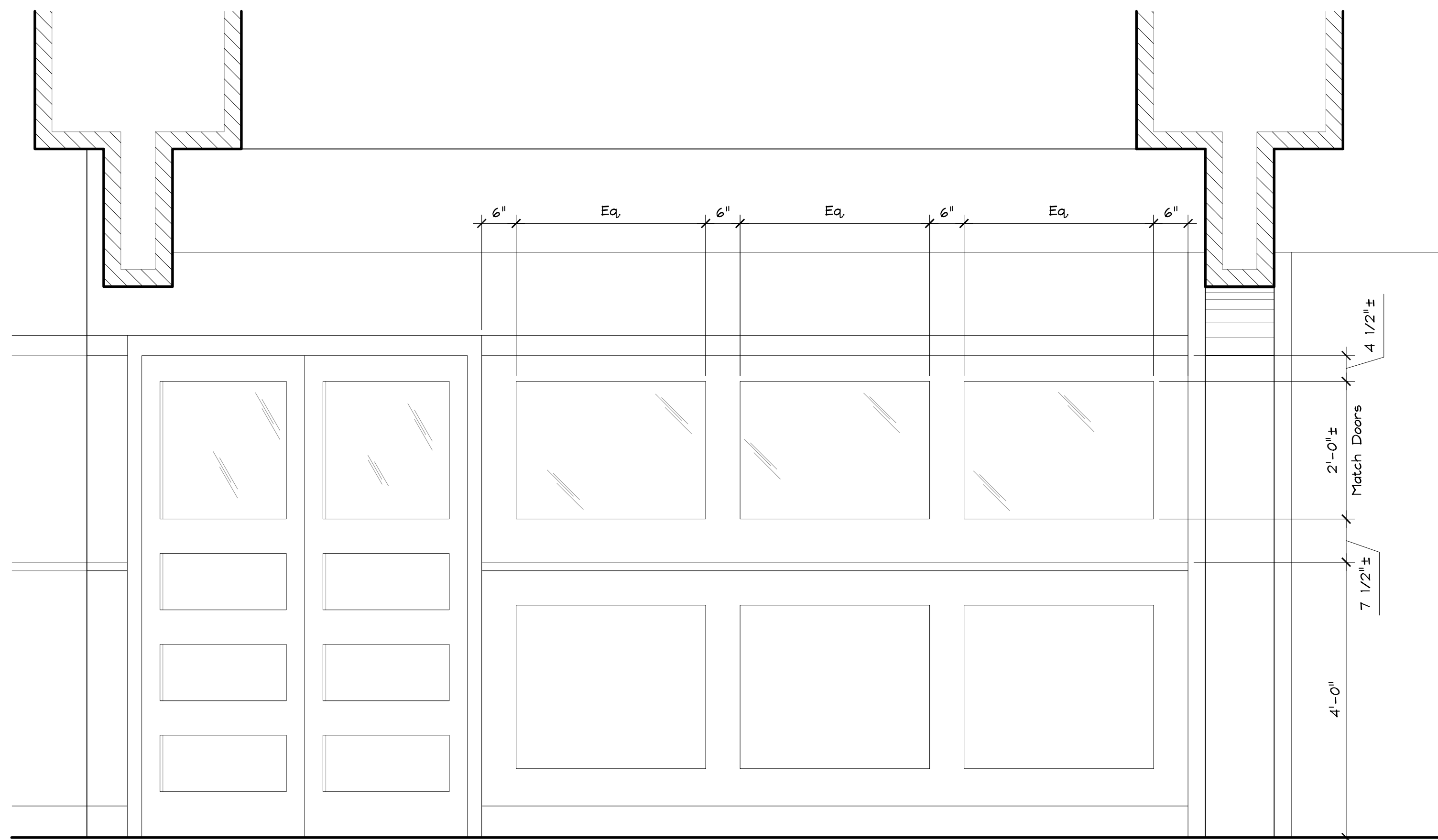
Dorm Corridor Elevation
Scale: 1/4" = 1'-0"

14
Typ. Panel Layout

2
2

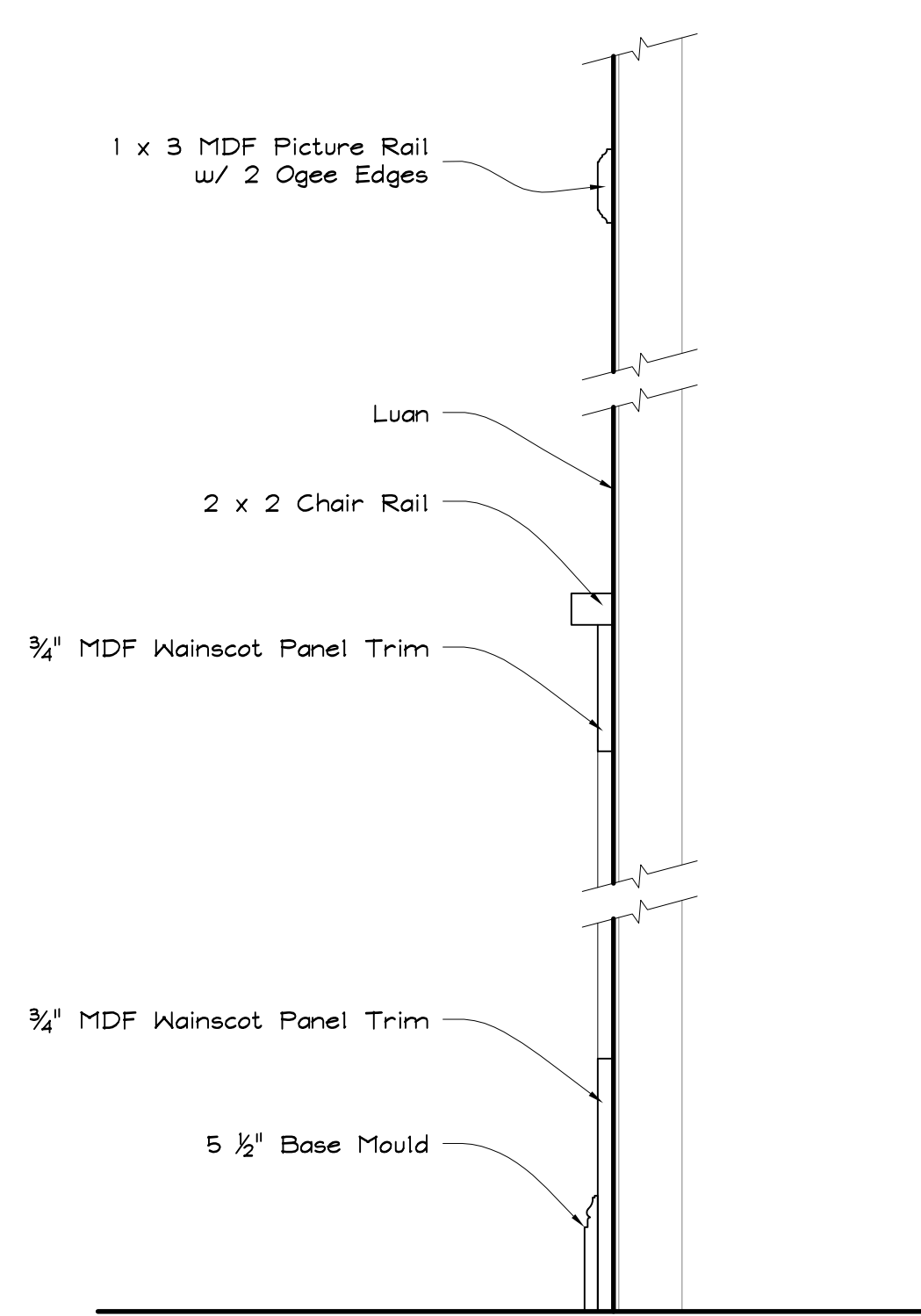
	HYDE PARK ENTERTAINMENT
	DIRECTOR: David Ellis
	PRODUCER: Ashok Amritraj
	PRODUCTION DESIGNER: Jaymes Minkie
SET: ASYLUM CORRIDOR	
SCALE: 1/4" = 1'-0"	
LOCATION:	
DATE: August 27, 2006	PAGE: 2 of 4

- ASYLUM CHANGEOVER
CONSTRUCTION NOTES:**
1. 26 Panel Doors- Single Lite 3 Panel Ladder.
 2. 1/2" raised Panel Wainscot (Plant On 1/2" MDF Routed).
 3. Chair Rail / Panel Mould @ 48" Above Floor on Top of Wainscot.
 4. 1 x 6 Wood Base Mould w/ Single Ogee Edge.
 5. 1 x 3 Wood Picture Rail w/ 2 Ogee Edges.
 6. Change Out Ceiling Panels to Hard Ceiling.
 7. Remove Flooring to Expose Concrete Floor or Tile (Square Lino.).
 8. Age Walls, Ceiling & Floors.



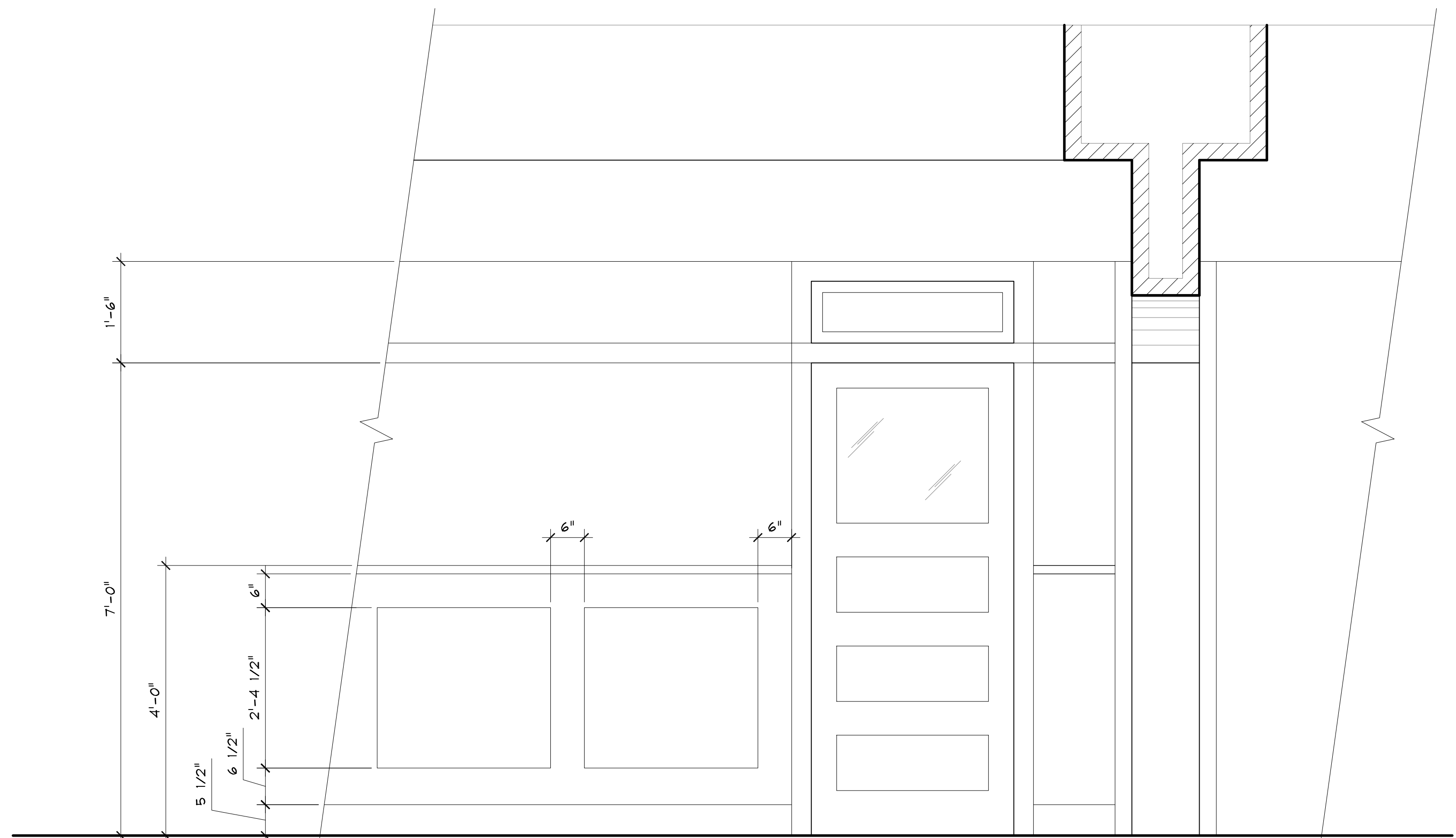
Typical Glass Panel Layout
Scale: 3/4" = 1'-0"

16
3



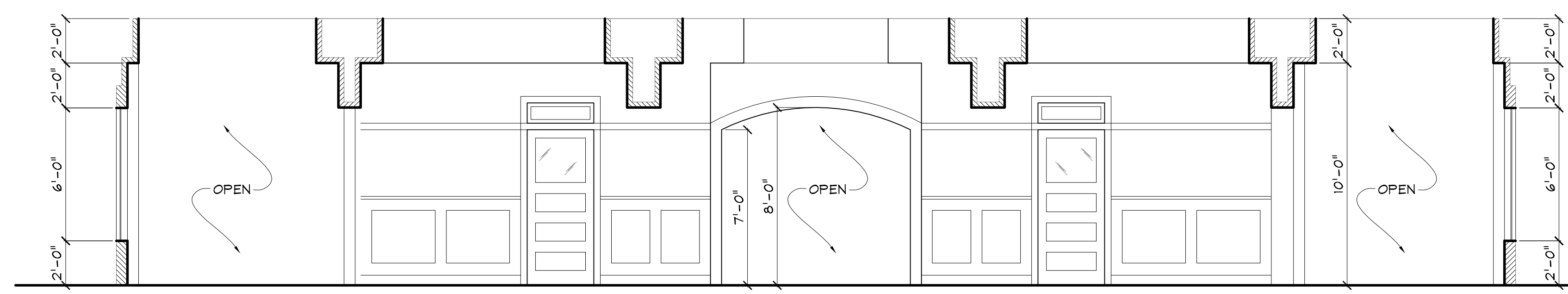
Wainscot Detail
Scale: 1 1/2" = 1'-0"

15
3



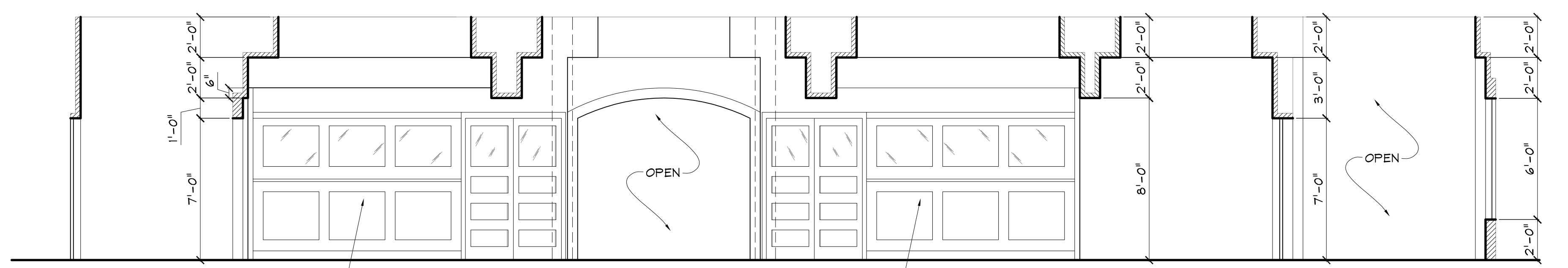
Typical Panel Layout
Scale: 3/4" = 1'-0"

14
3



Dorm Corridor Elevation
Scale: 1/4" = 1'-0"

9
3



Dorm Corridor Elevation
Scale: 1/4" = 1'-0"

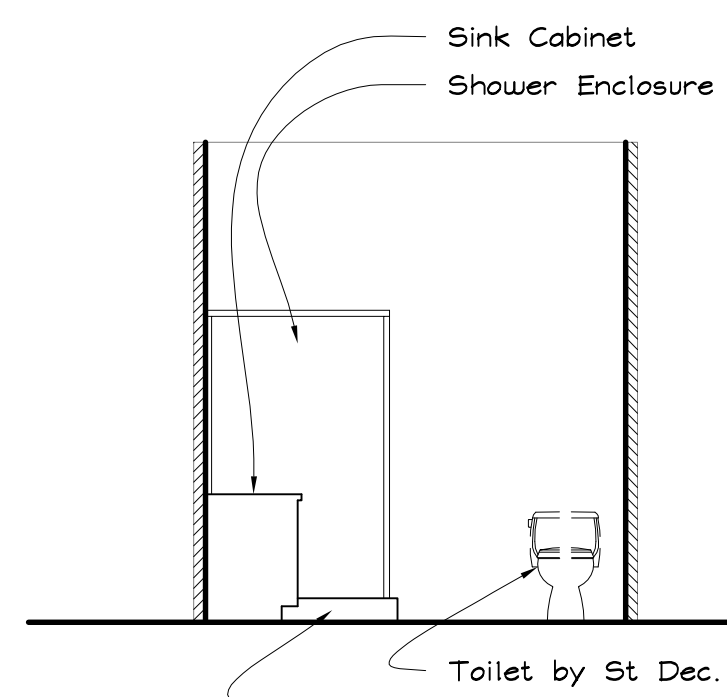
8
3

	HYDE PARK ENTERTAINMENT
	DIRECTOR: David Ellis
	PRODUCER: Ashek Amritraj
	PRODUCTION DESIGNER: Jaymes Minkie
	SET: ASYLUM CORRIDOR
	SCALE: 1/4" = 1'-0"
	LOCATION:
DATE: August 27, 2006	
PAGE: 3 of 4	

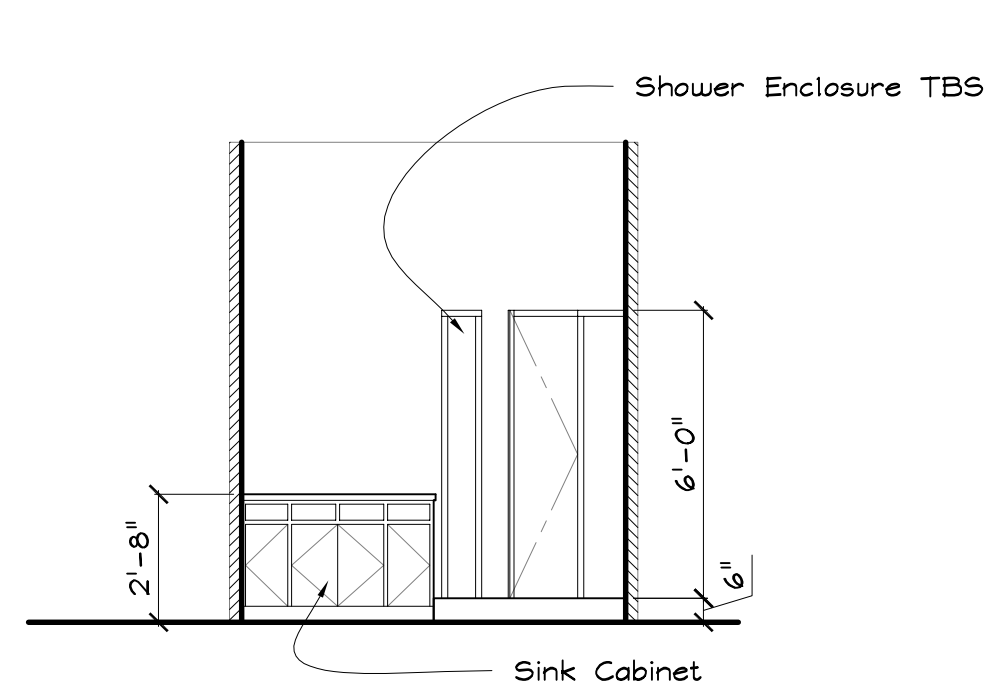
- ASYLUM CHANGEOVER
CONSTRUCTION NOTES:
1. 26 Panel Doors- Single Lite 3 Panel Ladder.
 2. 1/2" raised Panel Wainscot (Plant On 1/2" MDF Routed).
 3. Chair Rail / Panel Mould @ 48" Above Floor on Top of Wainscot.
 4. 1 x 6 Wood Base Mould w/ Single Ogee Edge.
 5. 1 x 3 Wood Picture Rail w/ 2 Ogee Edges.
 6. Change Out Ceiling Panels to Hard Ceiling.
 7. Remove Flooring to Expose Concrete Floor or Tile (Square Lino.).
 8. Age Walls, Ceiling & Floors.



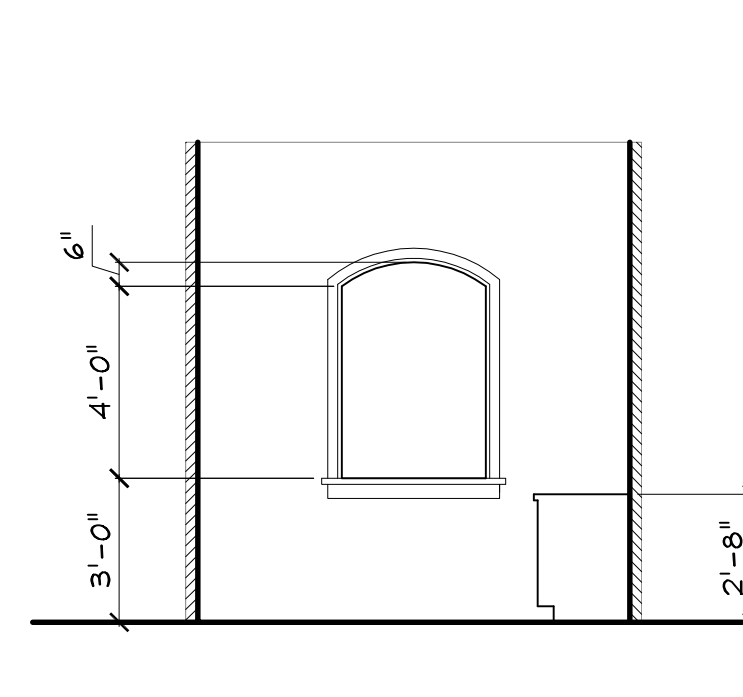
Dorm Bath Elevation 17
Scale: 1/4" = 1'-0"



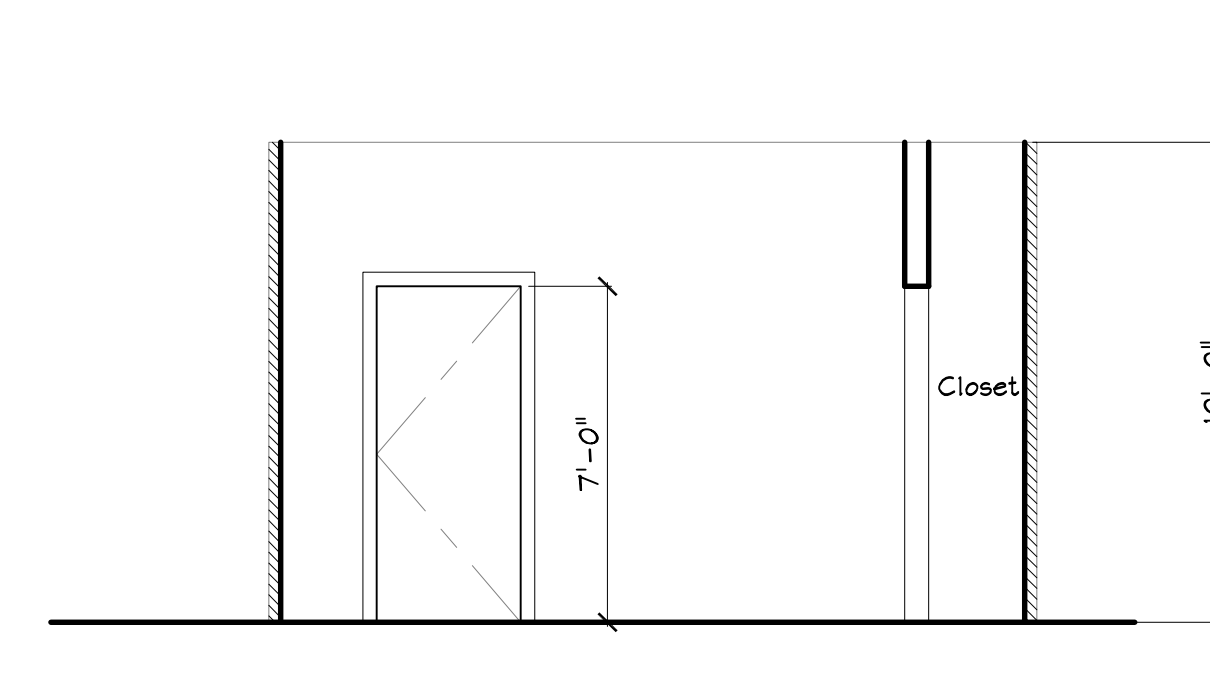
Dorm Bath Elevation 16
Scale: 1/4" = 1'-0"



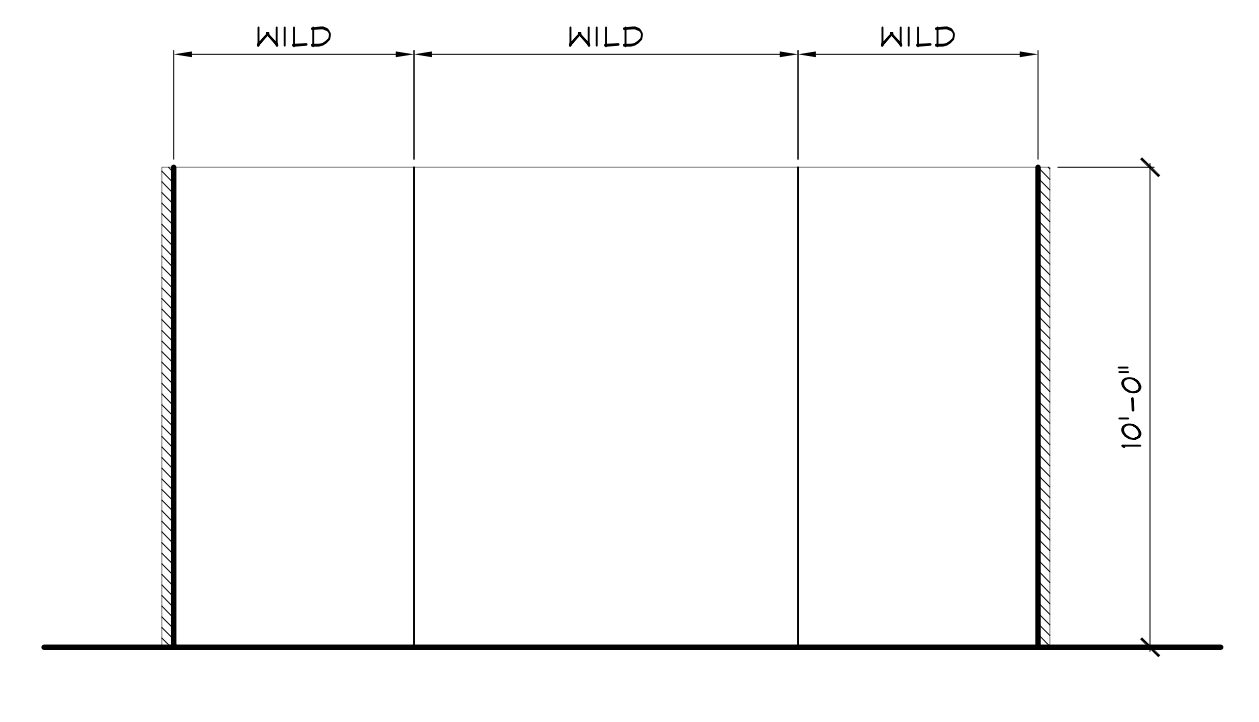
Dorm Bath Elevation 15
Scale: 1/4" = 1'-0"



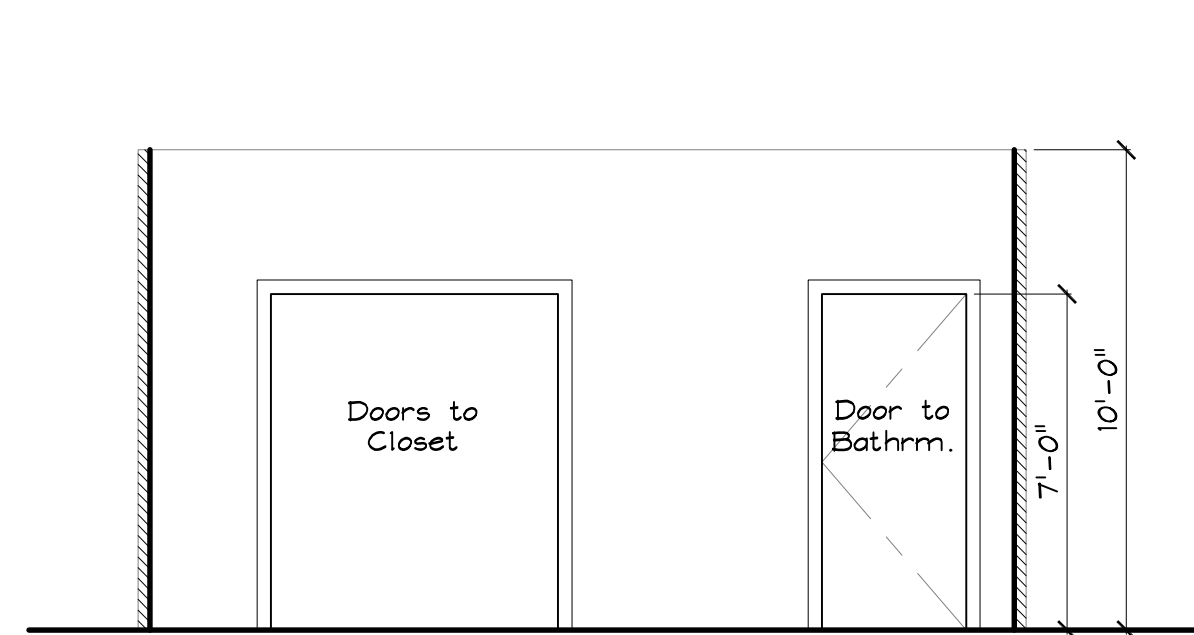
Dorm Bath Elevation 14
Scale: 1/4" = 1'-0"



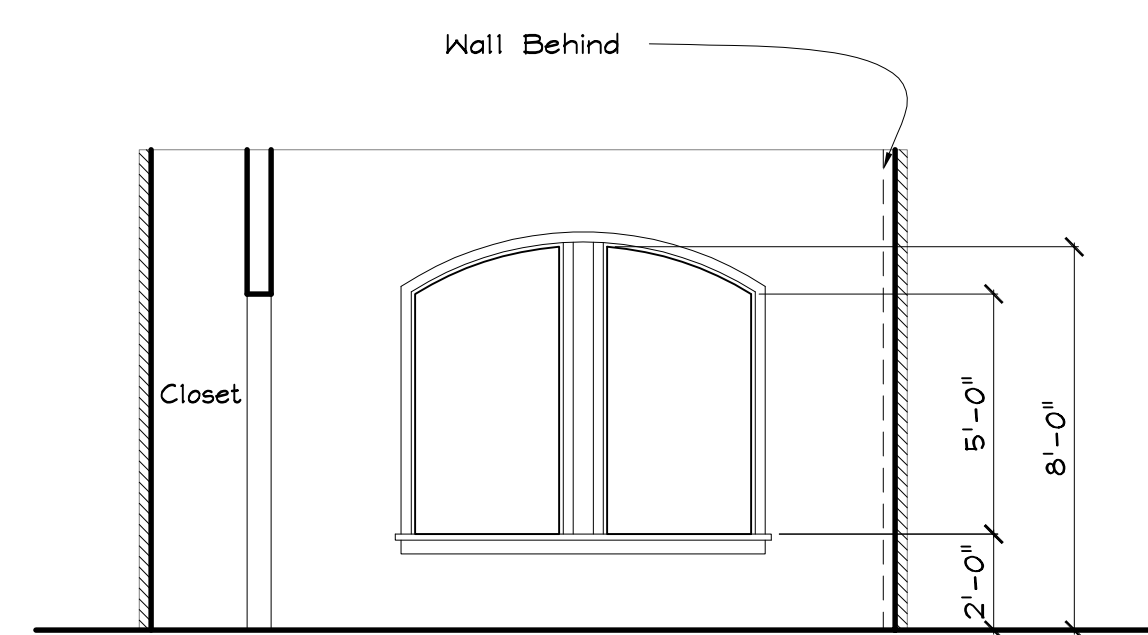
Dorm Room Elevation 13
Scale: 1/4" = 1'-0"



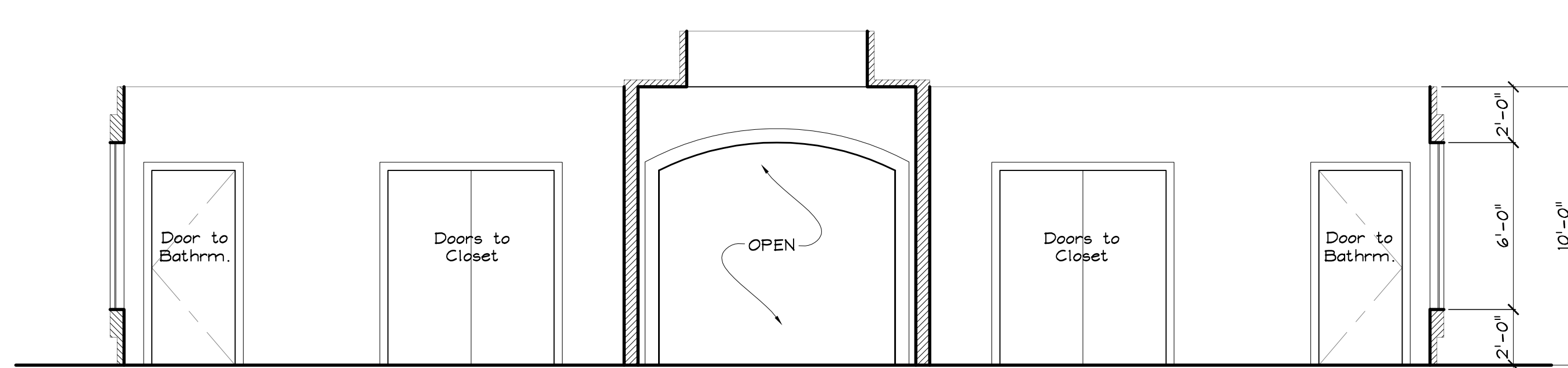
Dorm Room Elevation 12B
Scale: 1/4" = 1'-0"



Dorm Room Elevation 12A
Scale: 1/4" = 1'-0"



Dorm Room Elevation 11
Scale: 1/4" = 1'-0"



Dorm Room & Corridor Elevation 10
Scale: 1/4" = 1'-0"

	HYDE PARK ENTERTAINMENT	
	DIRECTOR:	David Ellis
	PRODUCER:	Ashek Amritraj
	PRODUCTION DESIGNER:	Jaymes Minkie
	SET:	ASYLUM CORRIDOR
	SCALE:	1/4" = 1'-0"
	DATE:	August 27, 2006
PAGE: 4 of 4		