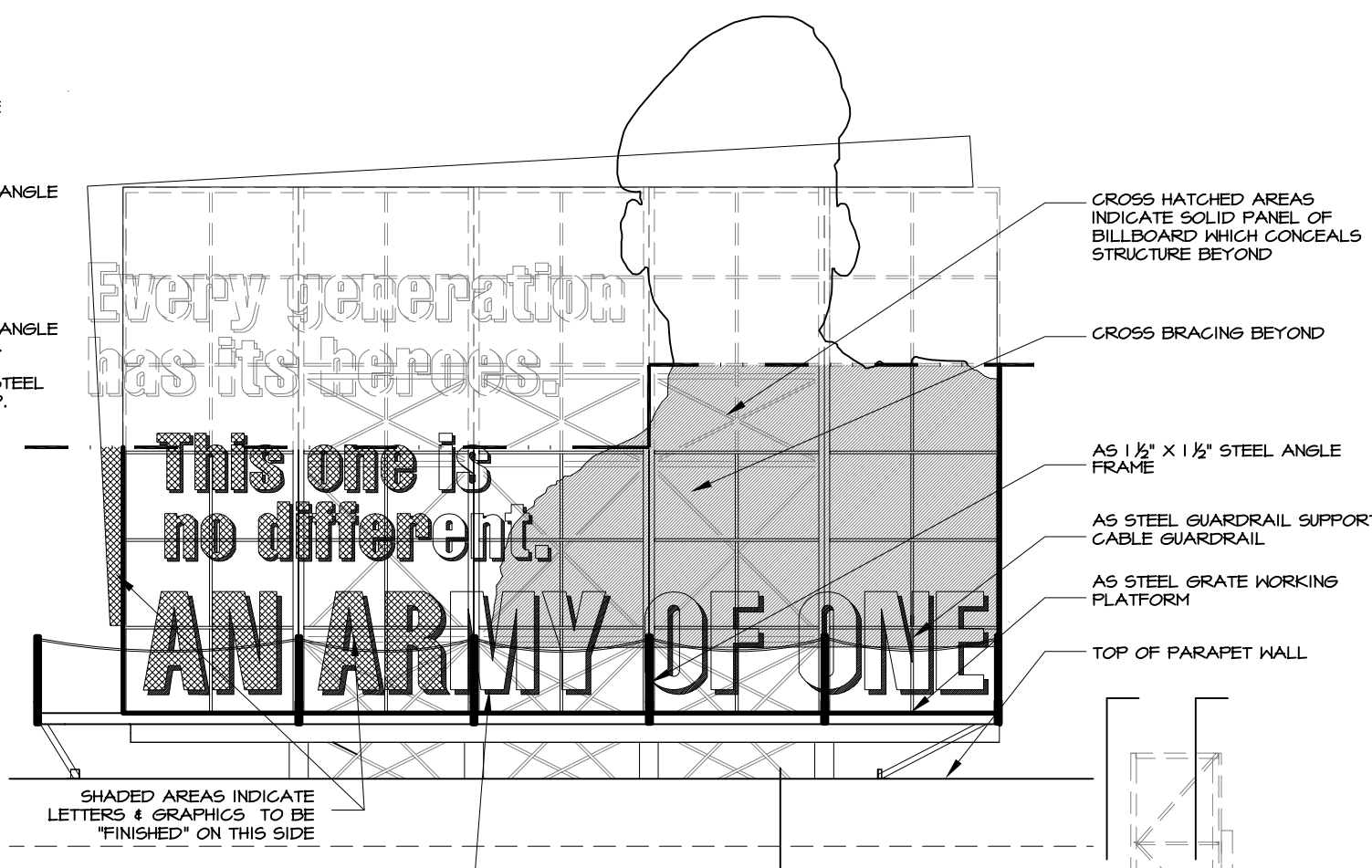


BACK ELEVATION
SCALE: 1/8" = 1'-0"

- HEIGHT OF WOULD BE BILLBOARD
- AS 1 1/2" x 1 1/2" STEEL ANGLE FRAME
- HEIGHT OF BUILT BILLBOARD
- AS 1 1/2" x 1 1/2" STEEL ANGLE CROSS BRACES, TYP.
- AS 3" x 3" DOUBLE STEEL ANGLE COLUMNS, TYP.

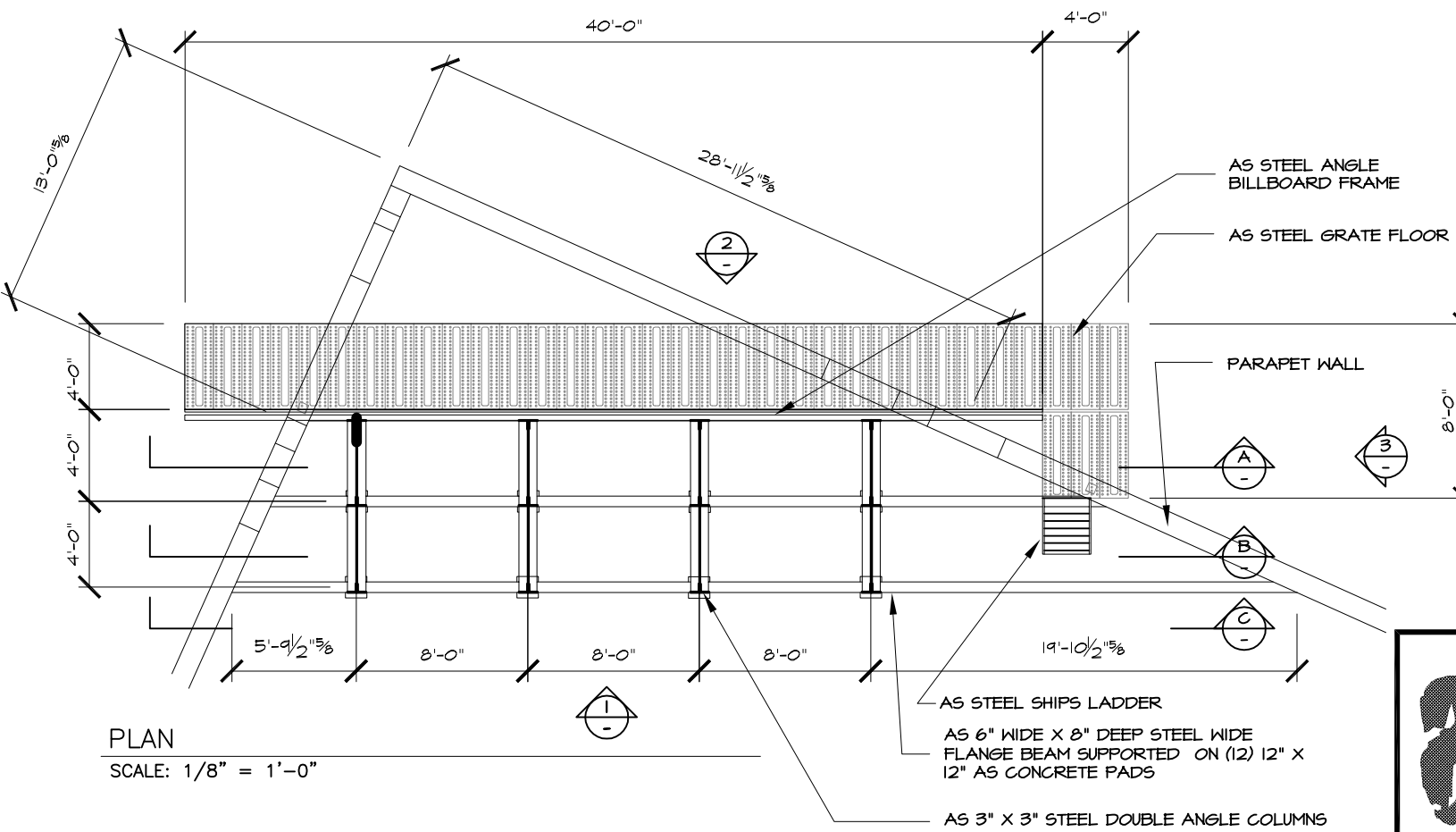


FRONT ELEVATION
SCALE: 1/8" = 1'-0"

- CROSS HATCHED AREAS INDICATE SOLID PANEL OF BILLBOARD WHICH CONCEALS STRUCTURE BEYOND
- CROSS BRACING BEYOND
- AS 1 1/2" x 1 1/2" STEEL ANGLE FRAME
- AS STEEL GUARDRAIL SUPPORTS & CABLE GUARDRAIL
- AS STEEL GRATE WORKING PLATFORM
- TOP OF PARAPET WALL

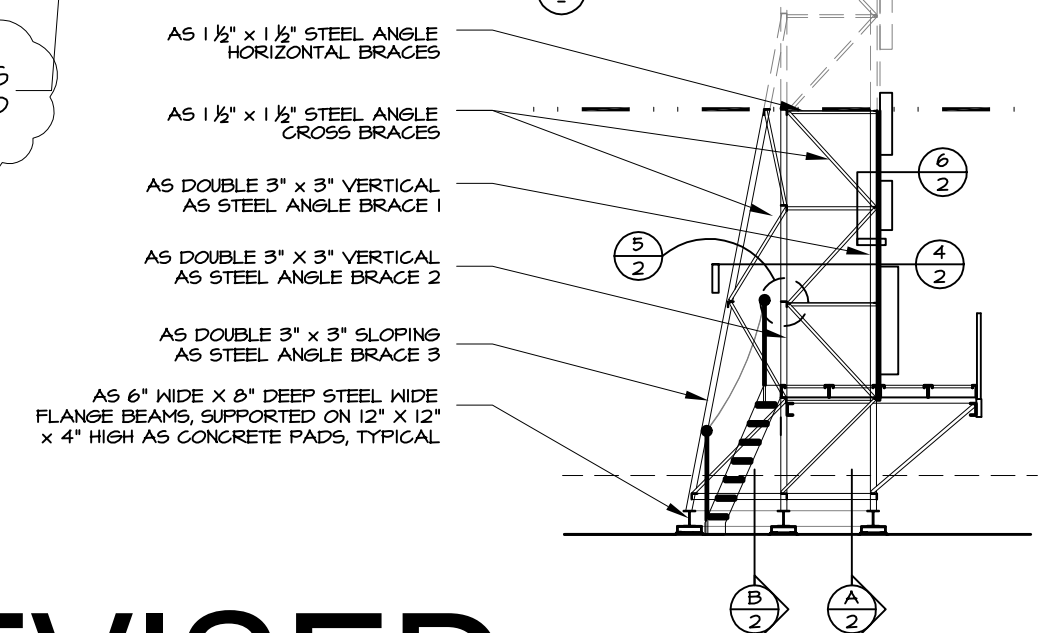
SHADED AREAS INDICATE LETTERS & GRAPHICS TO BE "FINISHED" ON THIS SIDE

NOTE: ALL LETTERS TO BE LIGHTED



PLAN
SCALE: 1/8" = 1'-0"

- AS STEEL ANGLE BILLBOARD FRAME
- AS STEEL GRATE FLOOR
- PARAPET WALL
- AS STEEL SHIPS LADDER
- AS 6" WIDE X 8" DEEP STEEL WIDE FLANGE BEAM SUPPORTED ON (12) 12" X 12" AS CONCRETE PADS
- AS 3" X 3" STEEL DOUBLE ANGLE COLUMNS

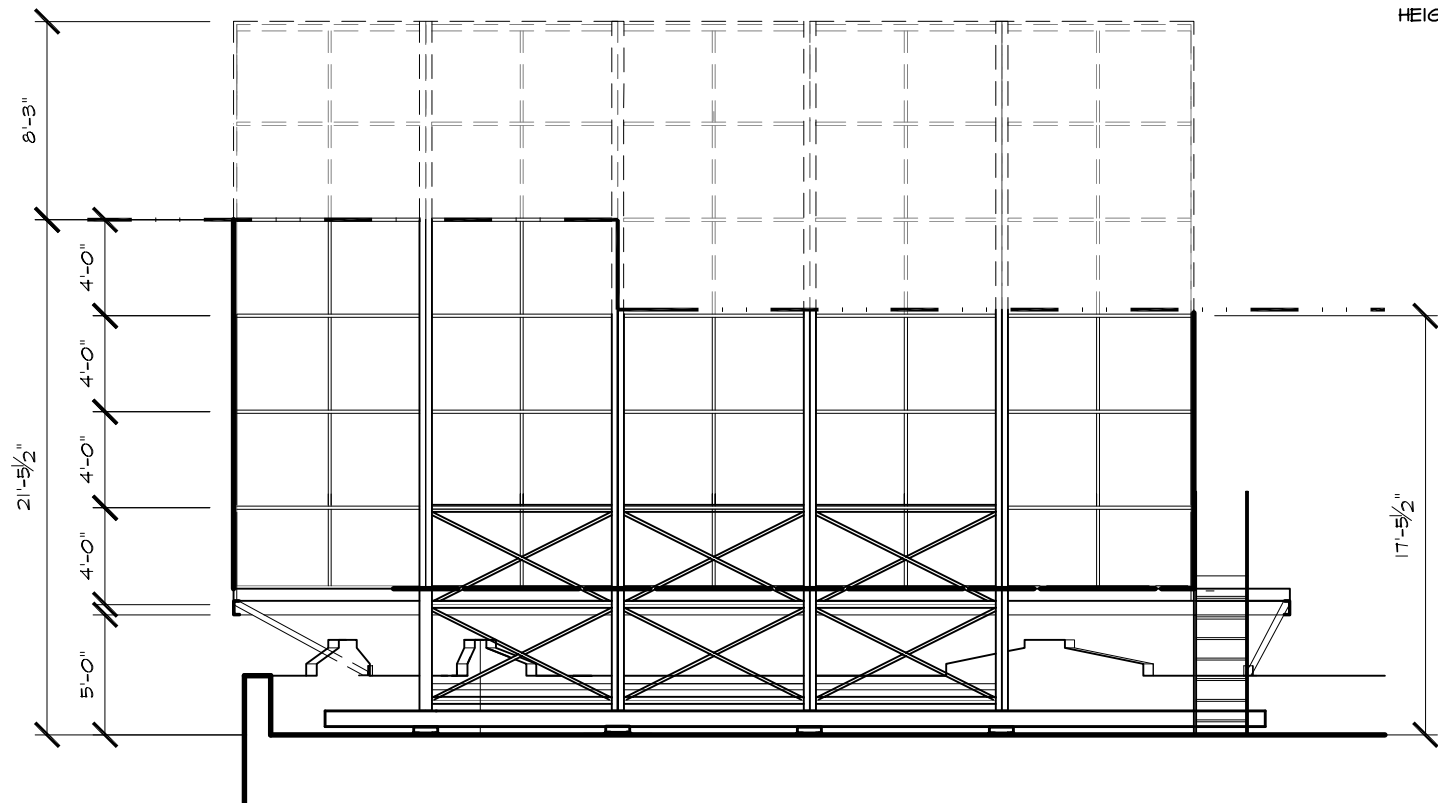


SIDE ELEVATION
SCALE: 1/8" = 1'-0"

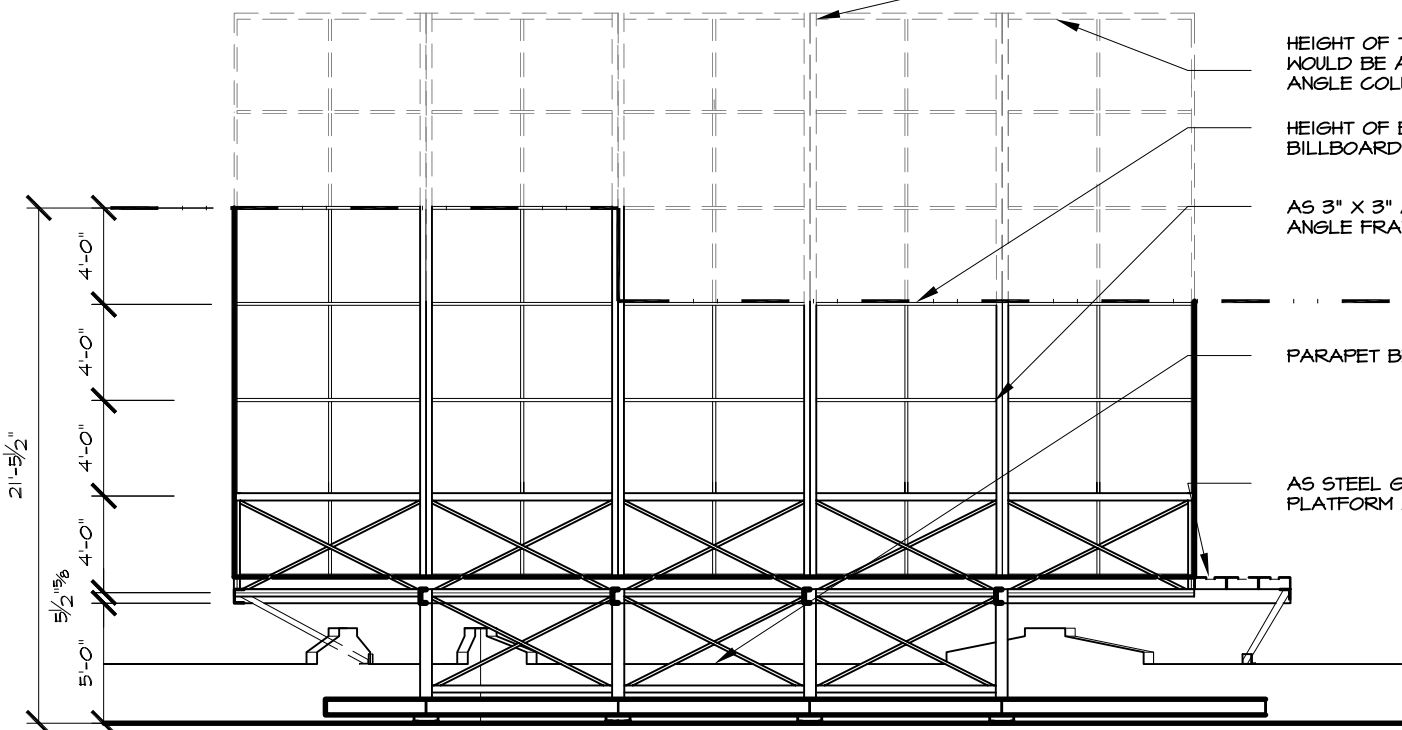
- AS 1 1/2" x 1 1/2" STEEL ANGLE HORIZONTAL BRACES
- AS 1 1/2" x 1 1/2" STEEL ANGLE CROSS BRACES
- AS DOUBLE 3" x 3" VERTICAL AS STEEL ANGLE BRACE 1
- AS DOUBLE 3" x 3" VERTICAL AS STEEL ANGLE BRACE 2
- AS DOUBLE 3" x 3" SLOPING AS STEEL ANGLE BRACE 3
- AS 6" WIDE X 8" DEEP STEEL WIDE FLANGE BEAMS, SUPPORTED ON 12" X 12" x 4" HIGH AS CONCRETE PADS, TYPICAL

REVISED

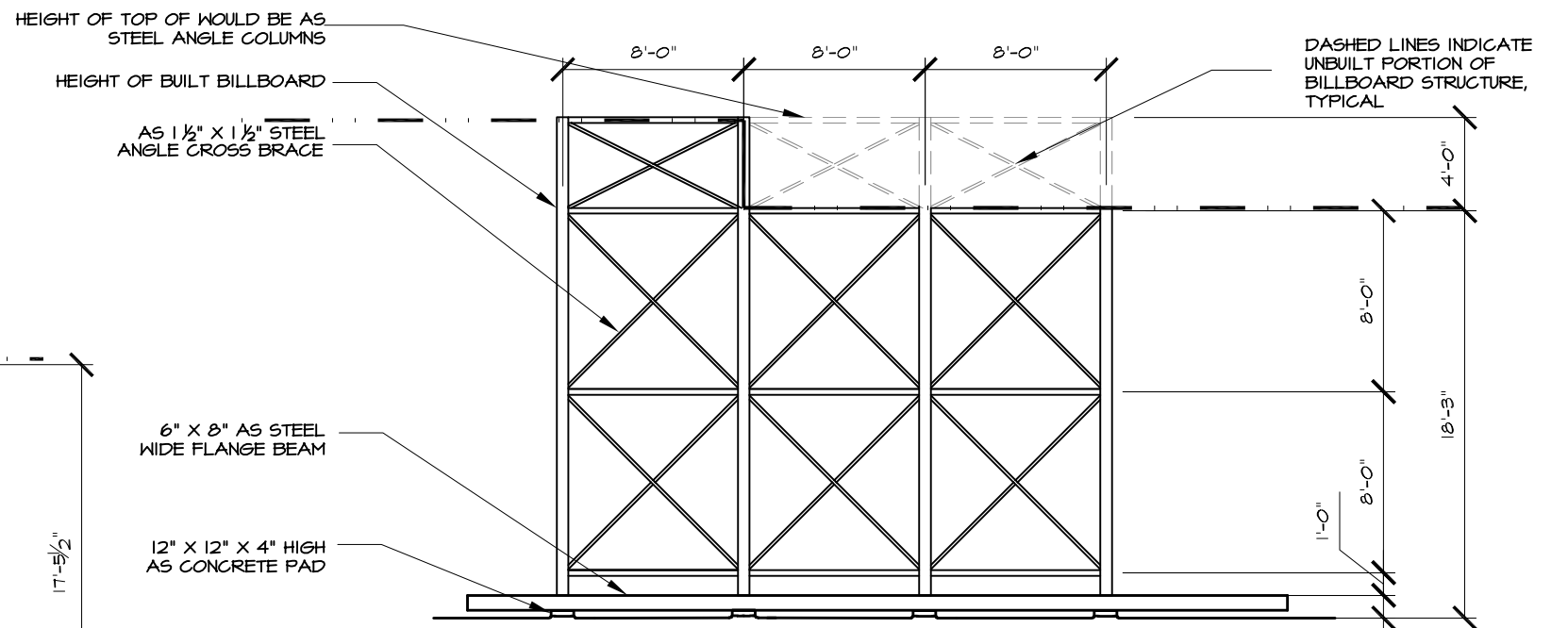
	SET NUMBER & DESCRIPTION: 117-INT.-DAVE'S-APARTMENT BILLBOARD DRAWINGS	SHEET NUMBER:
	LOCATION: STAGE 29, SONY STUDIOS	



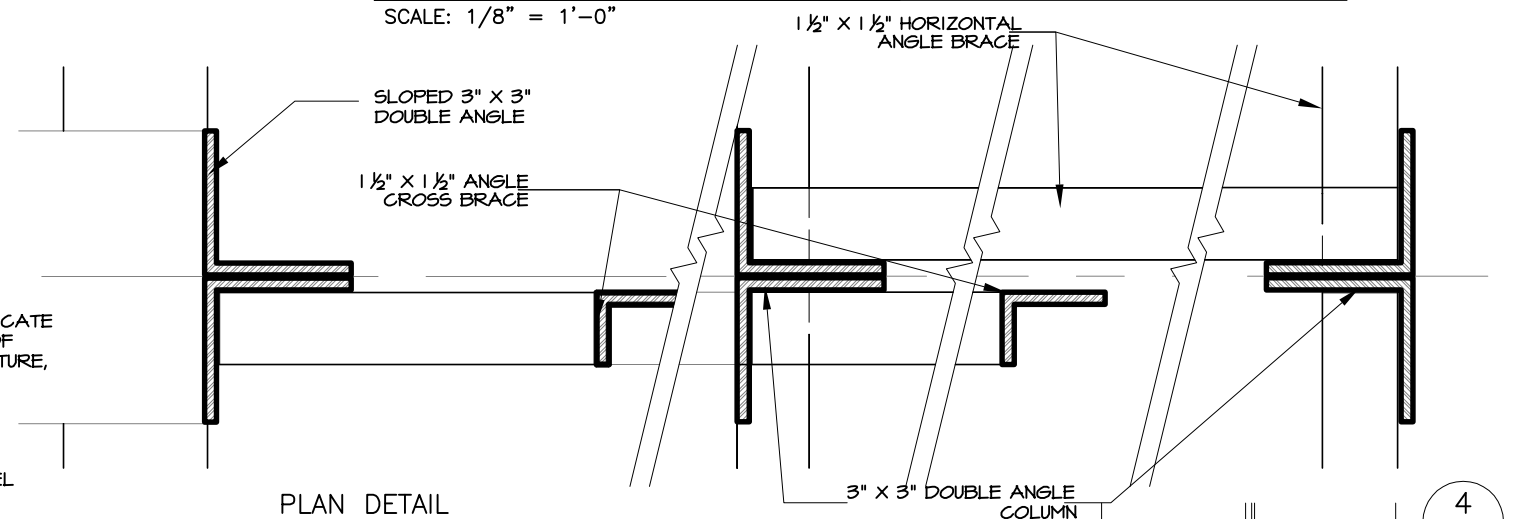
SECTION B @ VERTICAL BRACE 2
SCALE: 1/8" = 1'-0"



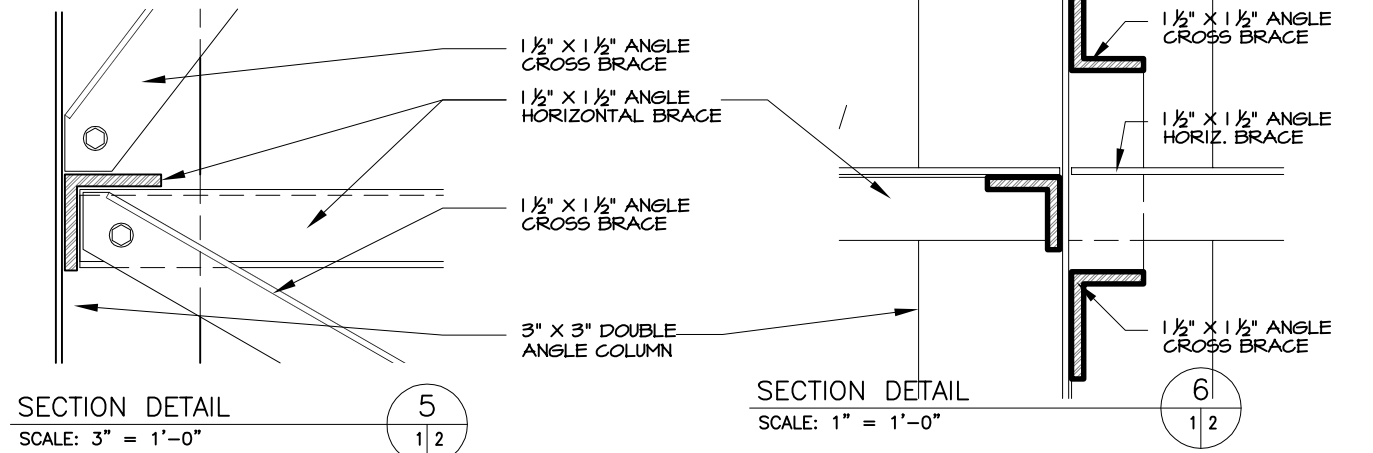
SECTION A @ BRACE 1
SCALE: 1/8" = 1'-0"



ISOLATED ELEVATION SLOPING BRACE 3
SCALE: 1/8" = 1'-0"



PLAN DETAIL
SCALE: 3" = 1'-0"



SECTION DETAIL 5
SCALE: 3" = 1'-0"

SECTION DETAIL 6
SCALE: 1" = 1'-0"

DASHED LINES INDICATE UNBUILT PORTION OF BILLBOARD STRUCTURE, TYPICAL

HEIGHT OF TOP OF WOULD BE AS STEEL ANGLE COLUMNS

HEIGHT OF BUILT BILLBOARD

AS 3" x 3" AS STEEL ANGLE FRAME

PARAPET BEYOND

AS STEEL GRATE WORK PLATFORM ACCESS

HEIGHT OF TOP OF WOULD BE AS STEEL ANGLE COLUMNS

HEIGHT OF BUILT BILLBOARD

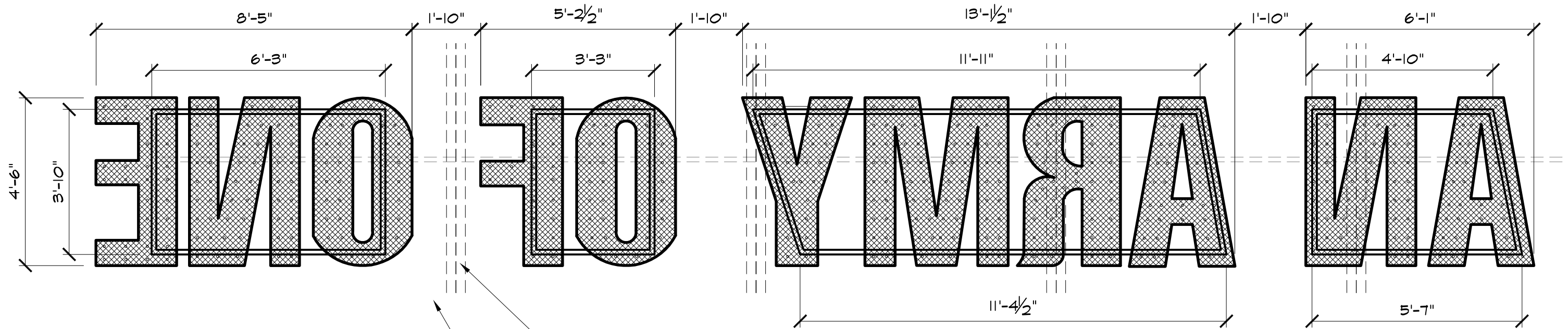
AS 1 1/2" x 1 1/2" STEEL ANGLE CROSS BRACE

6" x 8" AS STEEL WIDE FLANGE BEAM

12" x 12" x 4" HIGH AS CONCRETE PAD

DASHED LINES INDICATE UNBUILT PORTION OF BILLBOARD STRUCTURE, TYPICAL

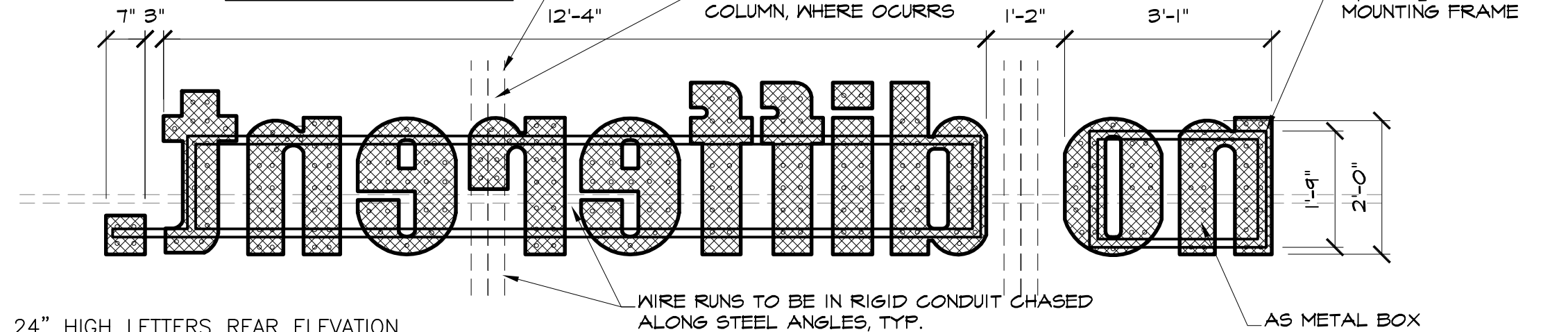
	SET NUMBER & DESCRIPTION: 117 INT. DAVE'S APARTMENT BILLBOARD DRAWINGS	SHEET NUMBER: <div style="font-size: 2em; font-weight: bold; text-align: center;">2</div>
	LOCATION: STAGE 29, SONY STUDIOS	



54" LETTER REAR ELEVATION

SCALE: 3/8" = 1'-0"

NOTE SCALE CHANGE

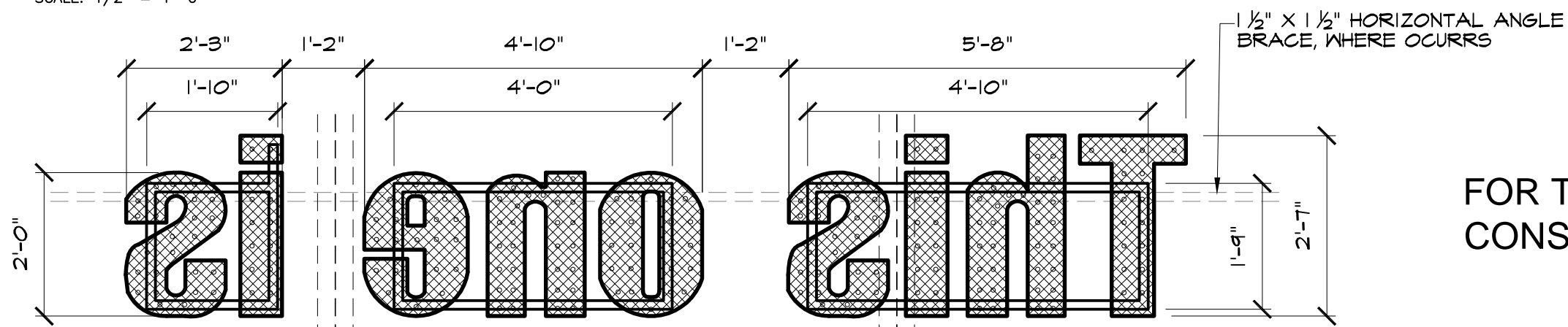


24" HIGH LETTERS REAR ELEVATION

SCALE: 1/2" = 1'-0"

NOTE:

TO PROJECT FULL SIZE IMAGE OF THESE LETTERS, USE AN ORIGINAL OF SHEET 5.

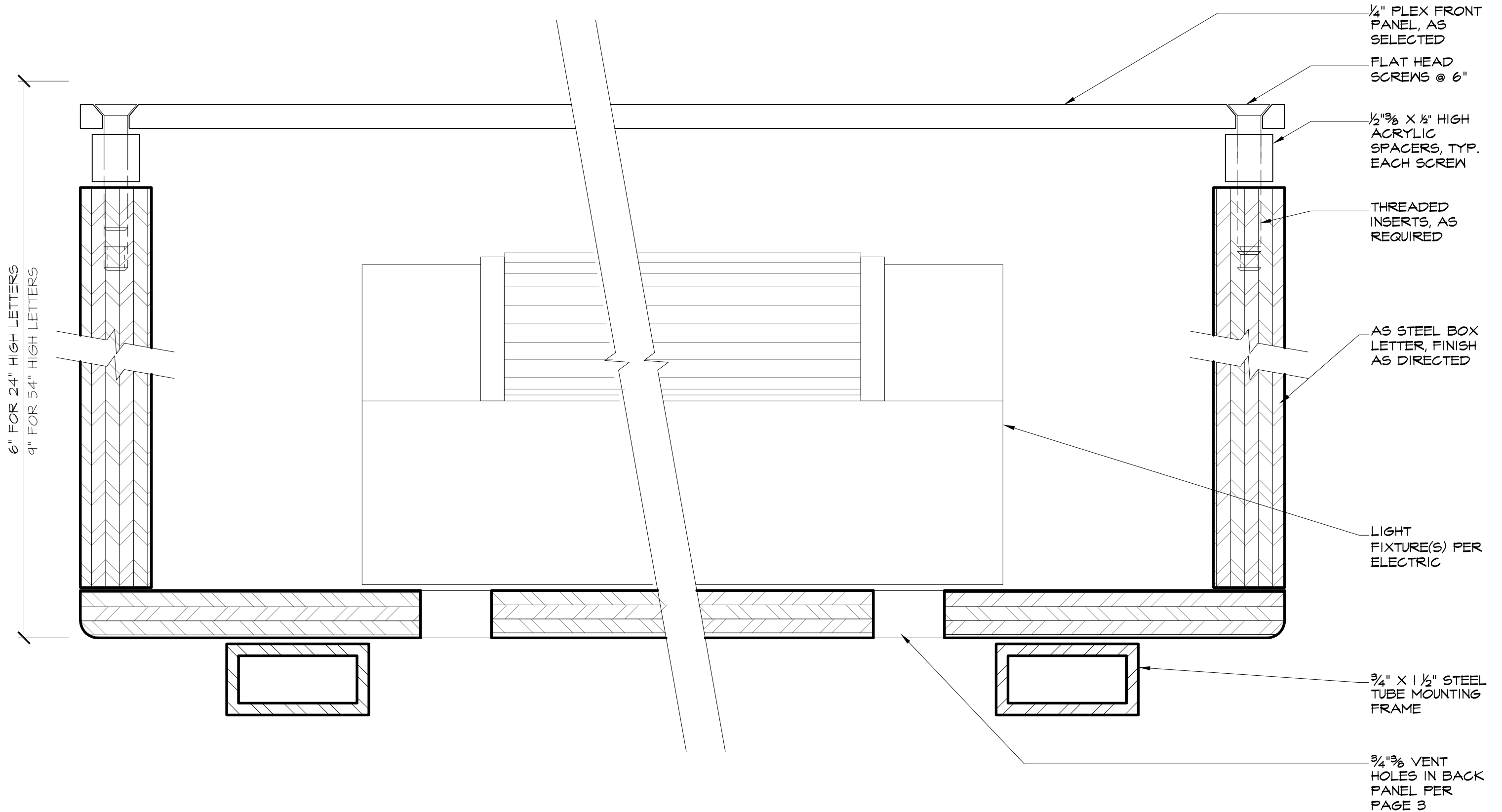


24" HIGH LETTERS REAR ELEVATION


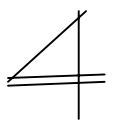
SCALE: 1/2" = 1'-0"

FOR TYPICAL LETTER BOX CONSTRUCTION SEE PAGE 4

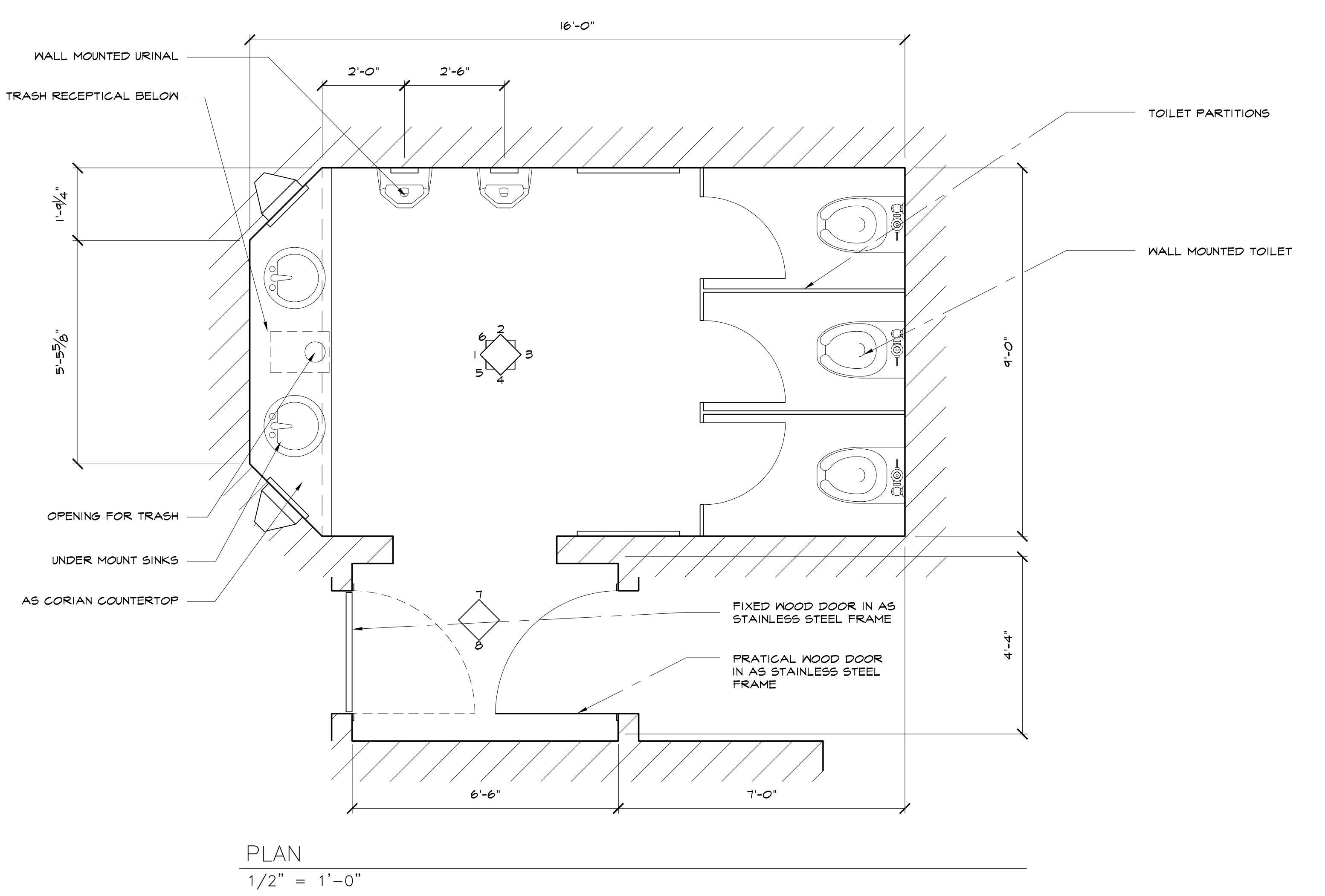
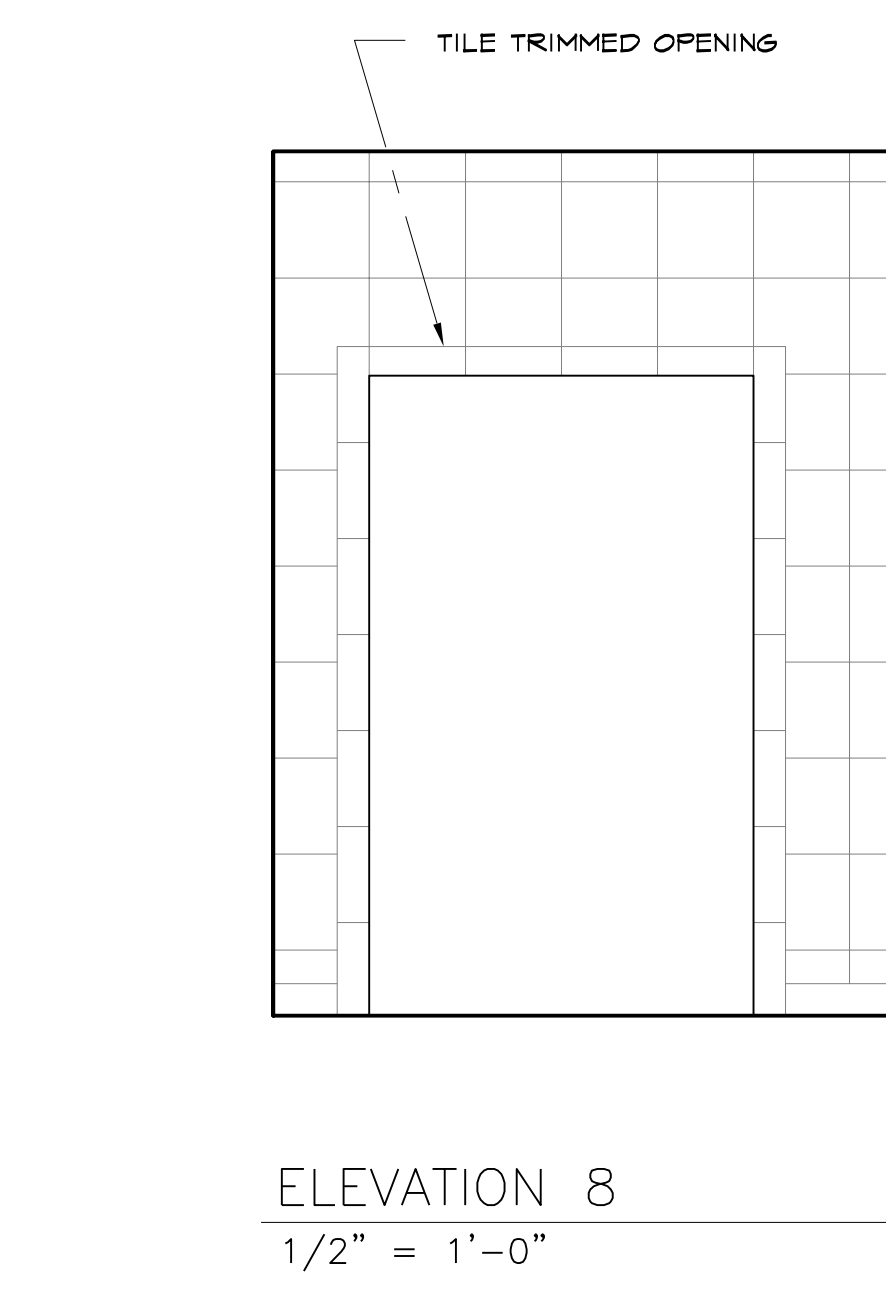
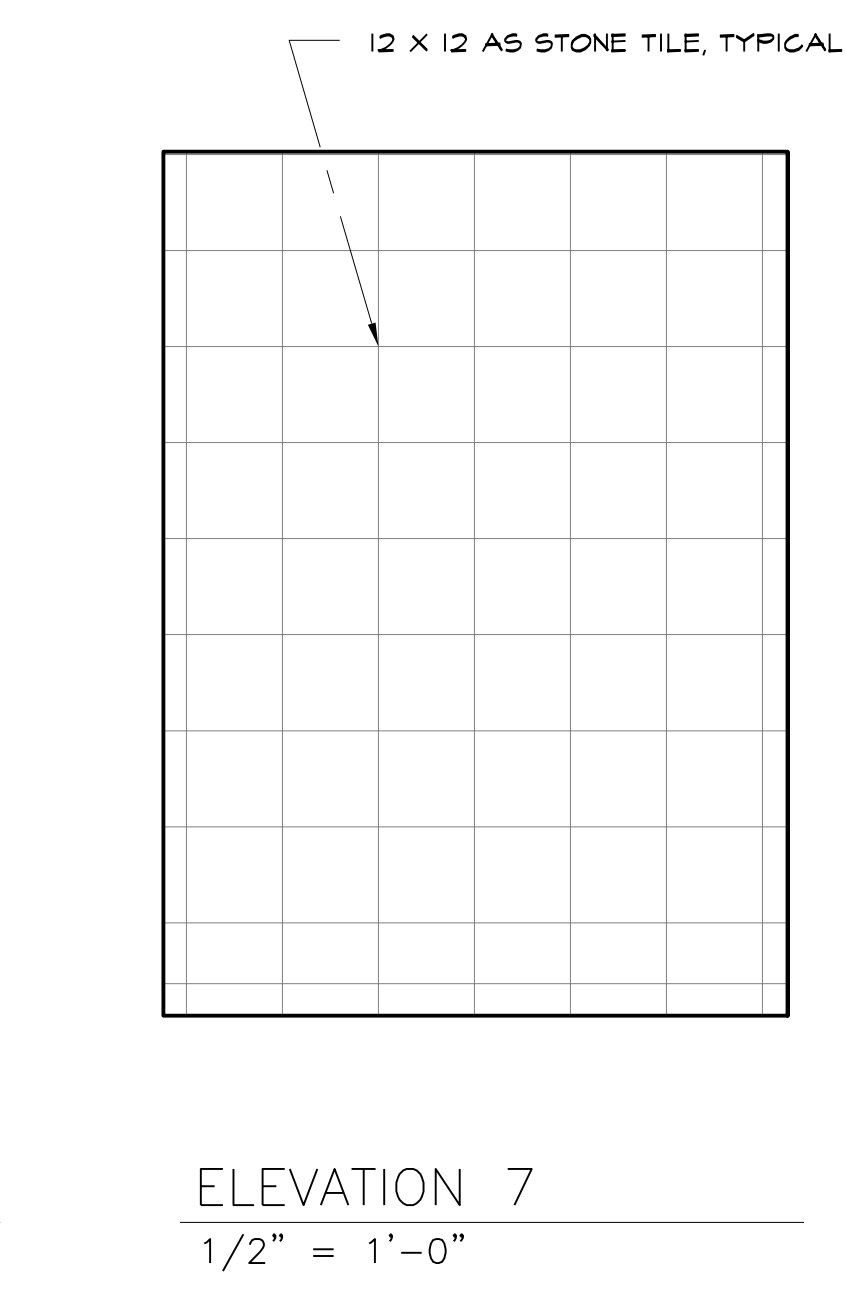
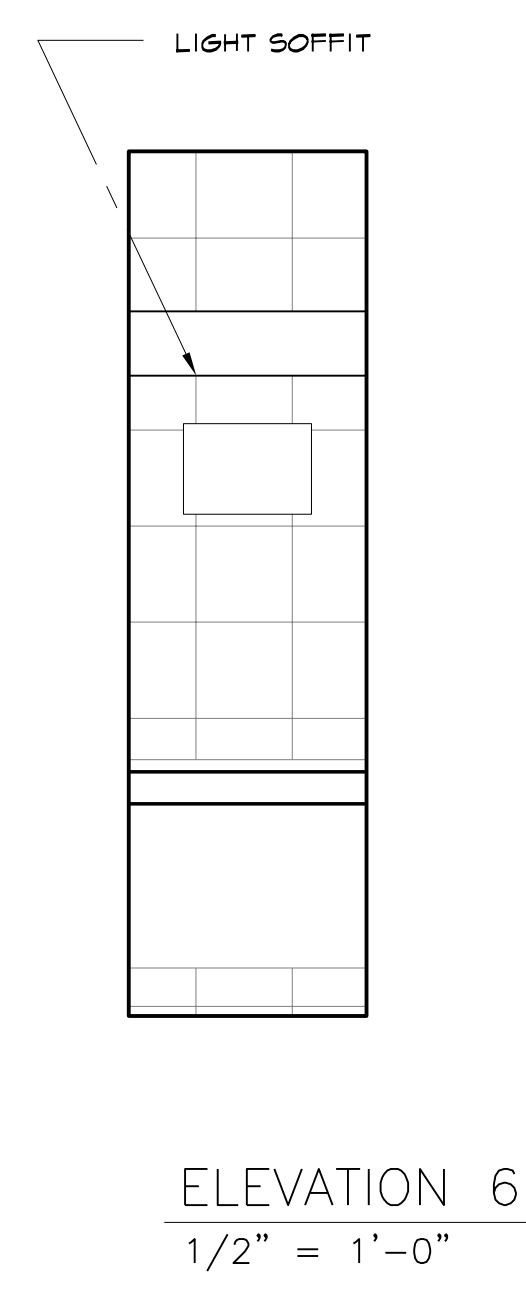
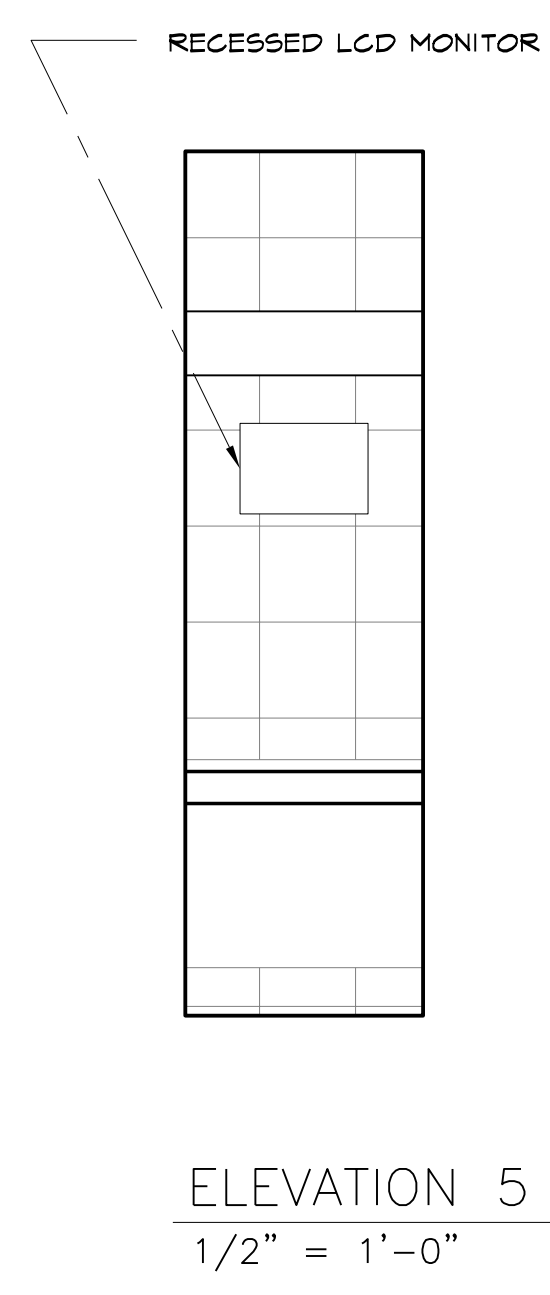
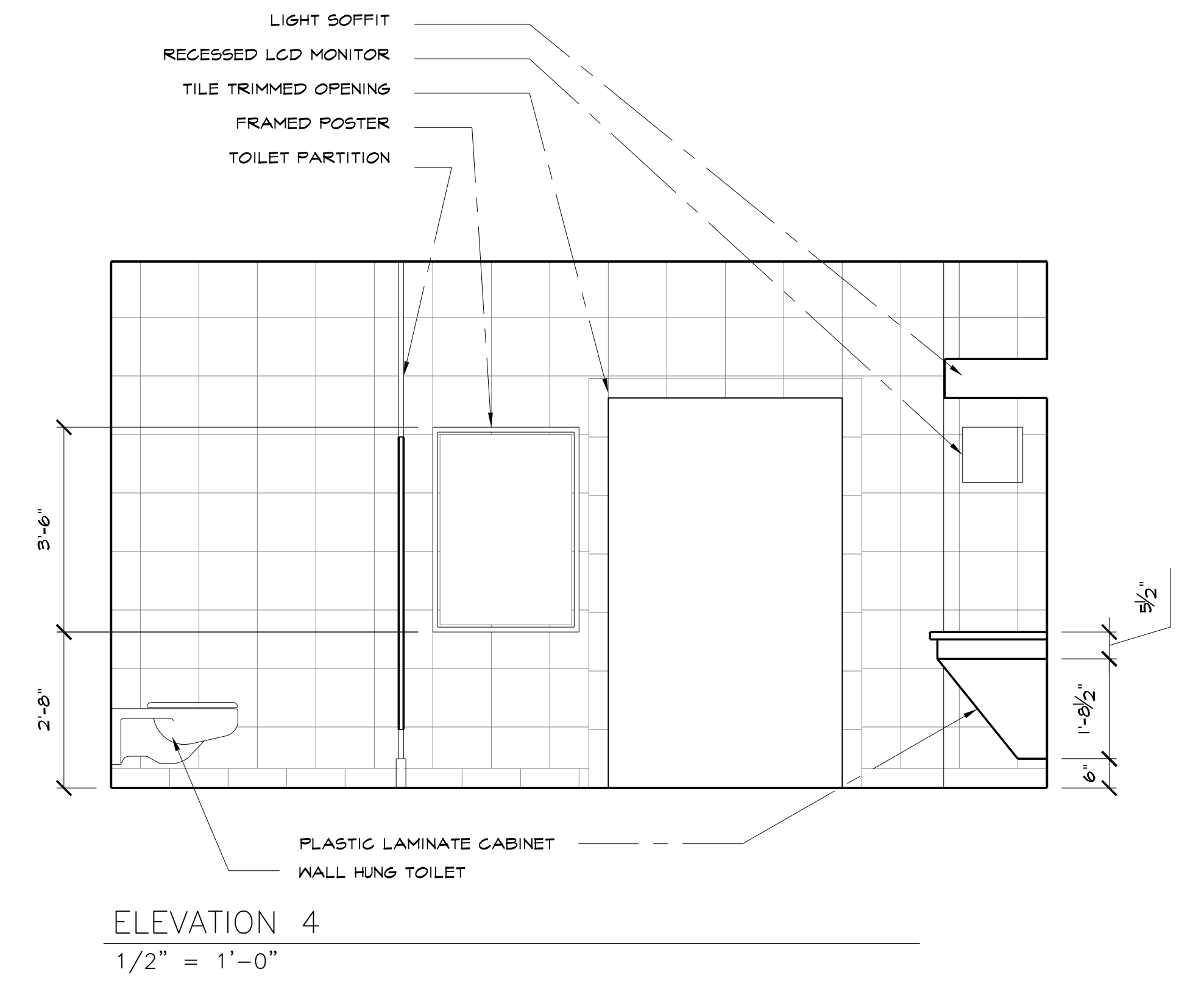
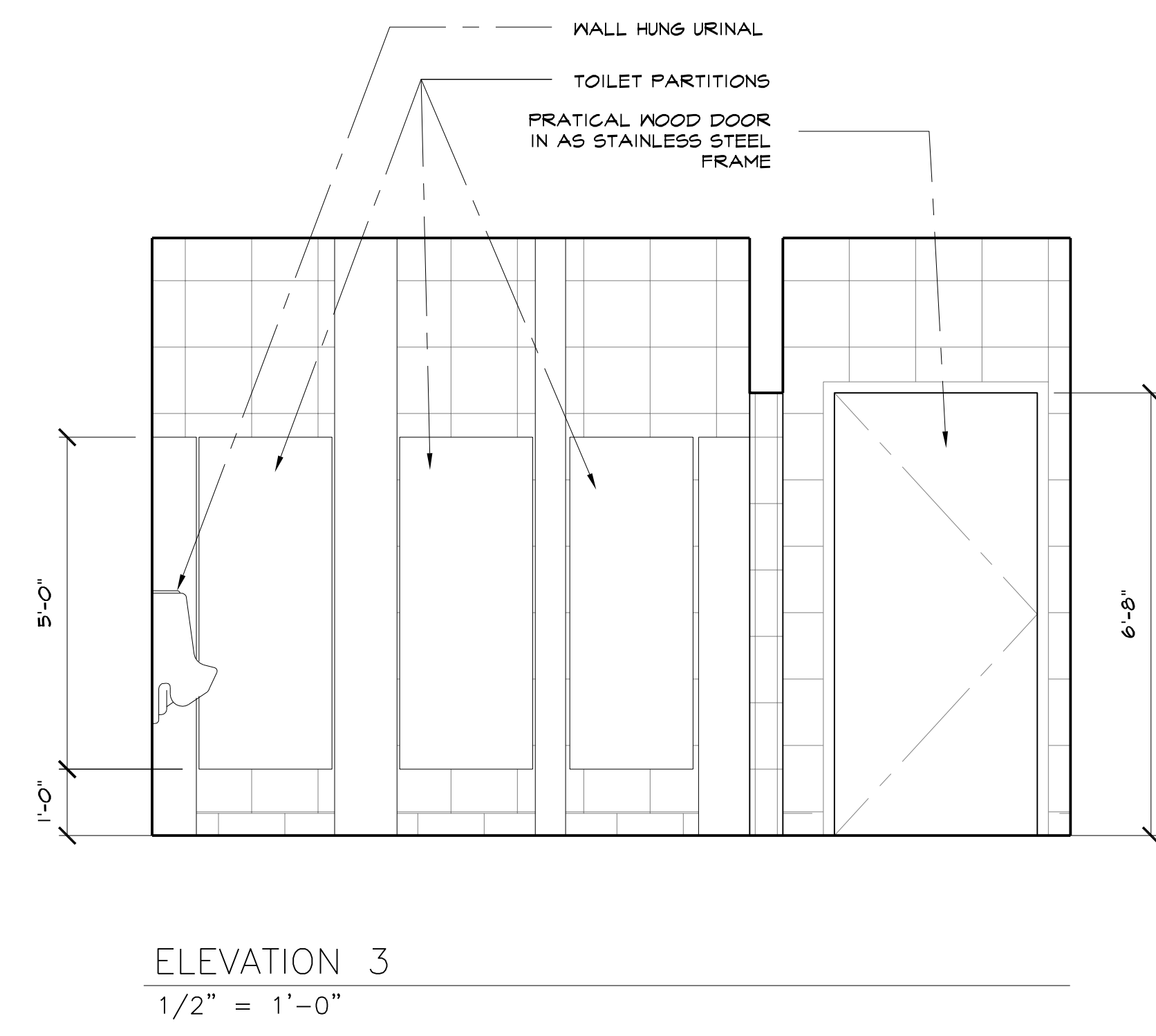
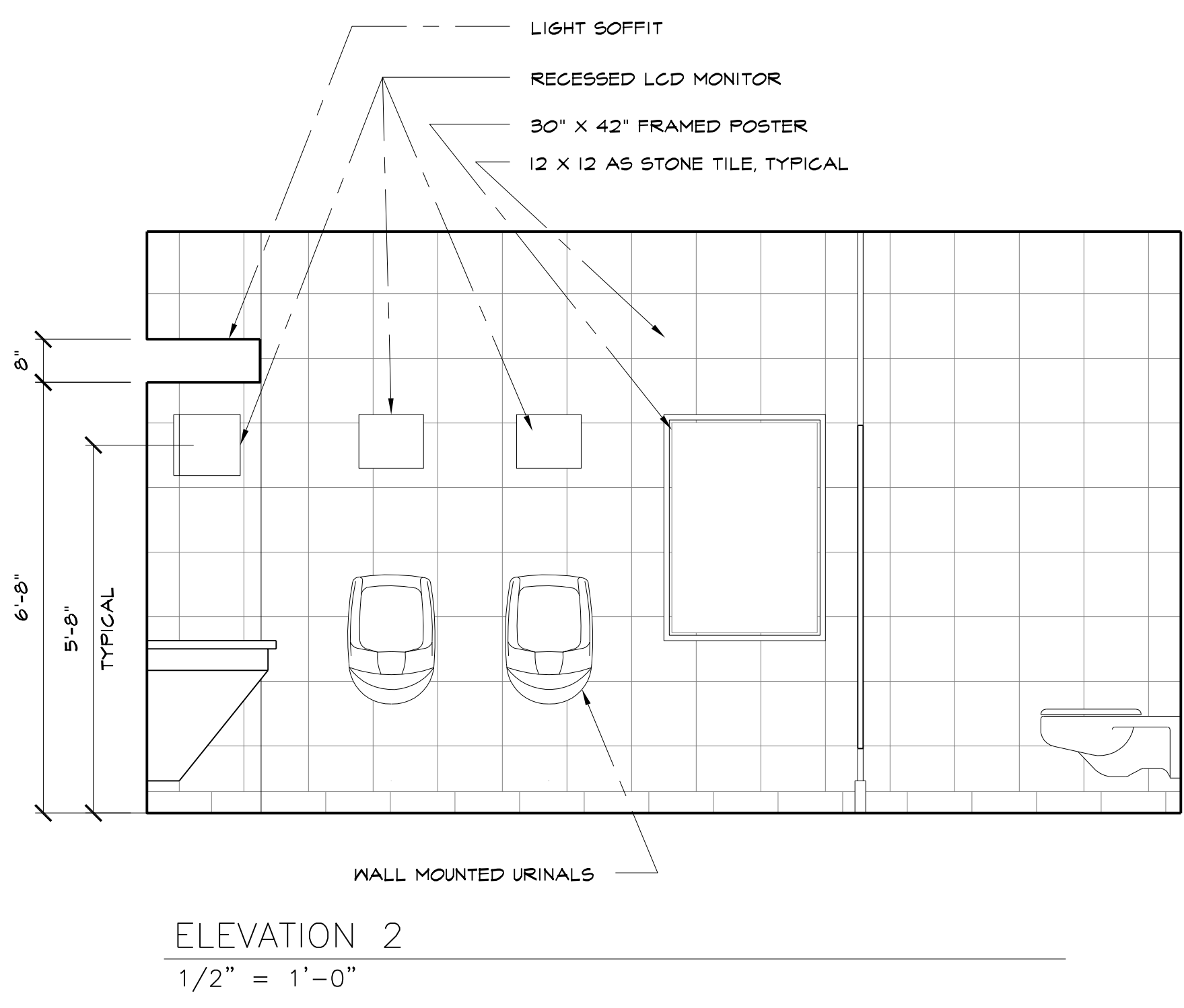
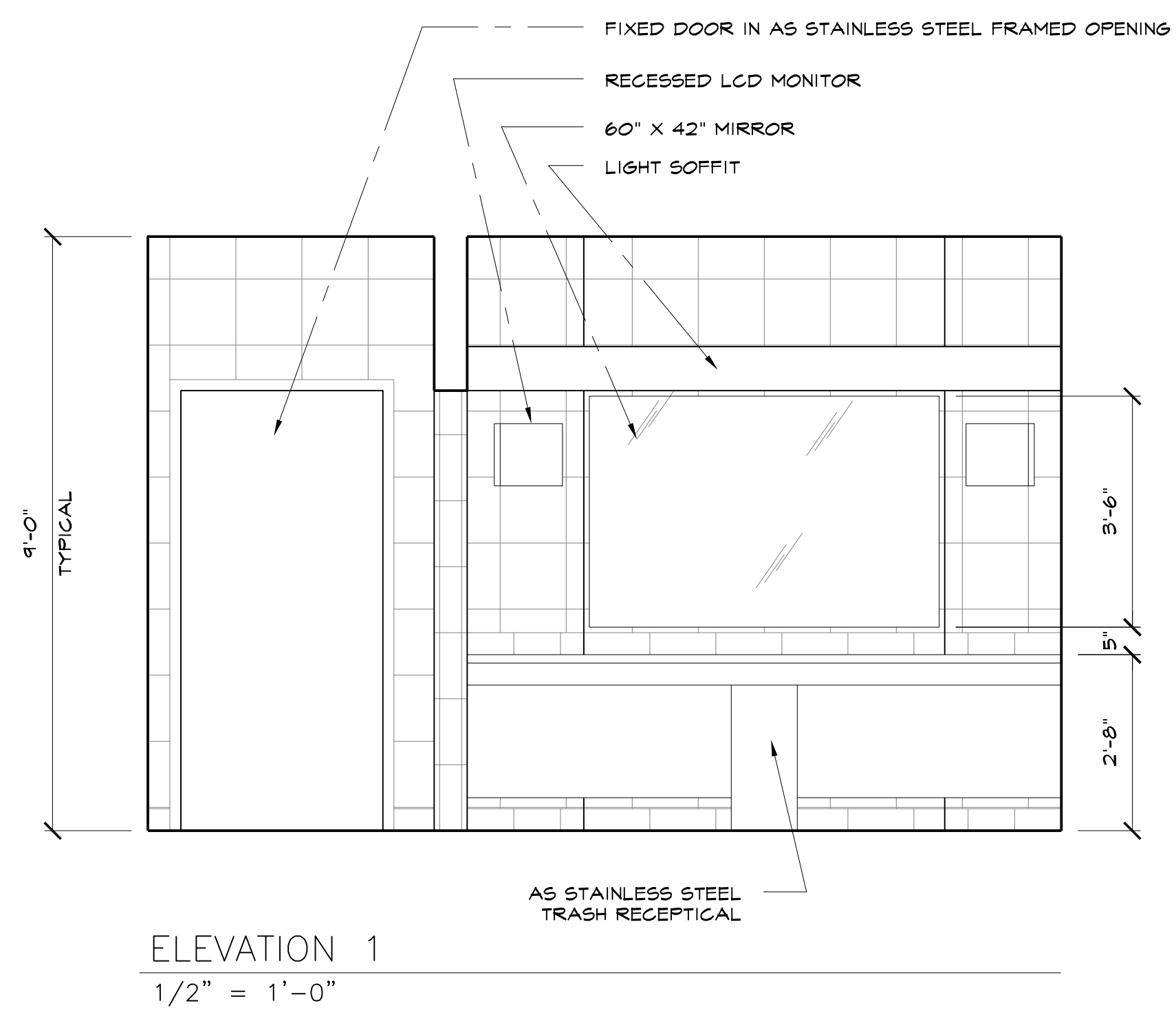
	SET NUMBER & DESCRIPTION: 117 INT. DAVE'S APARTMENT BILLBOARD LETTER DETAILS	SHEET NUMBER: 3
	LOCATION: STAGE 29, SONY STUDIOS	



TYPICAL BOX LETTER DETAIL
FULL SCALE

	SET NUMBER & DESCRIPTION: 117 INT. DAVE'S APARTMENT BILLBOARD LETTER DETAILS	SHEET NUMBER: 
	LOCATION: STAGE 29, SONY STUDIOS	





anger MANAGEMENT		DIRECTOR: PETER SEGAL PRODUCTION DESIGNER: ALAN AU SUPERVISING ART DIRECTOR: TONY FANNING ART DIRECTOR: DOMENIC SILVESTRI SET DECORATOR: CHRIS SPELLMAN	
DATE: 3/8/2002	SET NAME: 15-ESFPN ZONE MEN'S ROOM	SHEET NUMBER:	
SCALE: AS NOTED	DRAWING: PLAN & ELEVATIONS		
REVISIONS:	DRAWN BY: JEFF BECK	APPROVED:	CF:

